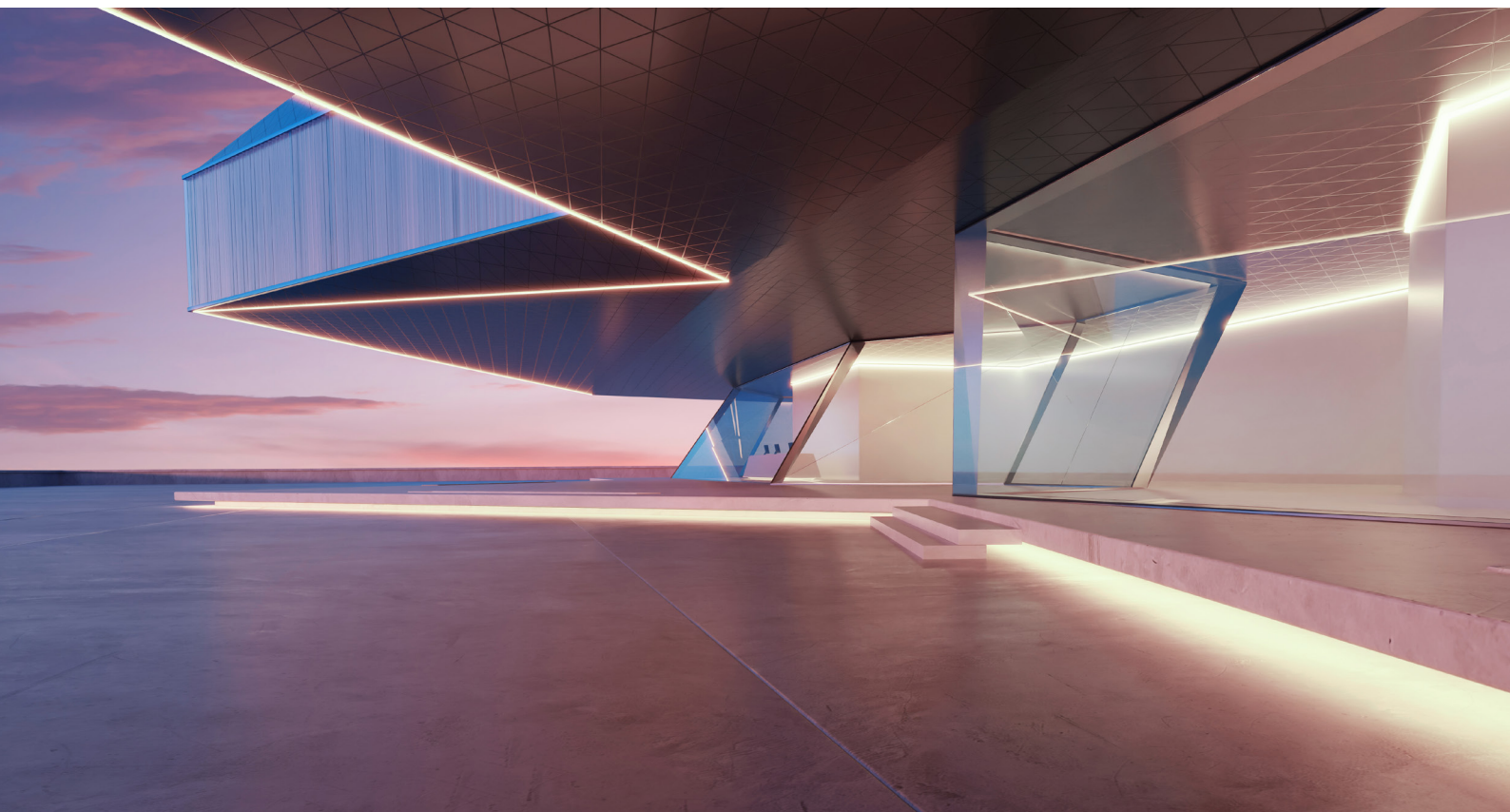


secom
here comes the light



BELEL

STRIP LED IP65

230V DIRECT TO MAINS



www.secom.es

BELEL

STRIP LED IP65

3
years
warranty

FLEXIBLE STRIP DIRECT TO
MAINS 230V



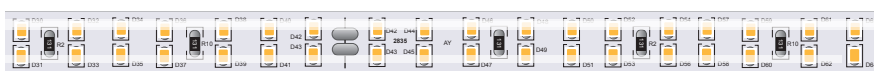
BELEL, decorative lighting system in a continuous line, connected directly to the 230V mains via a power supply.

High heat dissipation and IP65 watertightness thanks to the transparent PVC cover.

LED strip roll with installation of up to 50 metres per power supply, without risk of voltage drops. No additional transformers, amplifiers or adapters required.



BELEL / 18mm. / IP65



Ref.	W/m	N° LED/m	⚡DC	PCB width	°K	CRI	⚡	Lm/m	SDCM	CLASSE	👁️	🌀	🕒 L70B50 Ta25°C
S2006728450220B	10	180	230V AC	18 mm.	4000K	>80	1 m.	800	<3	III	Group 0	50 m.	50.000 h



COMPONENTS

SCX230B	Power supply for LED strip
S20220REG	Regulation for LED strip
S20220V	LED strip connector
S20220VL	LED strip L-joint

S20220VT	LED strip T-joint
S2022VTF	End cap
SOTR007	Fixing clips x10 pcs.

POWER SUPPLY



REGULATION



STRIP CONNECTOR



STRIP L-JOINT



STRIP T-JOINT



END CAP



FIXING CLIPS



secom
here comes the light



www.secom.es