

secom

CAMIN
outdoor
bollard



MADE
IN SPAIN



CAMIN



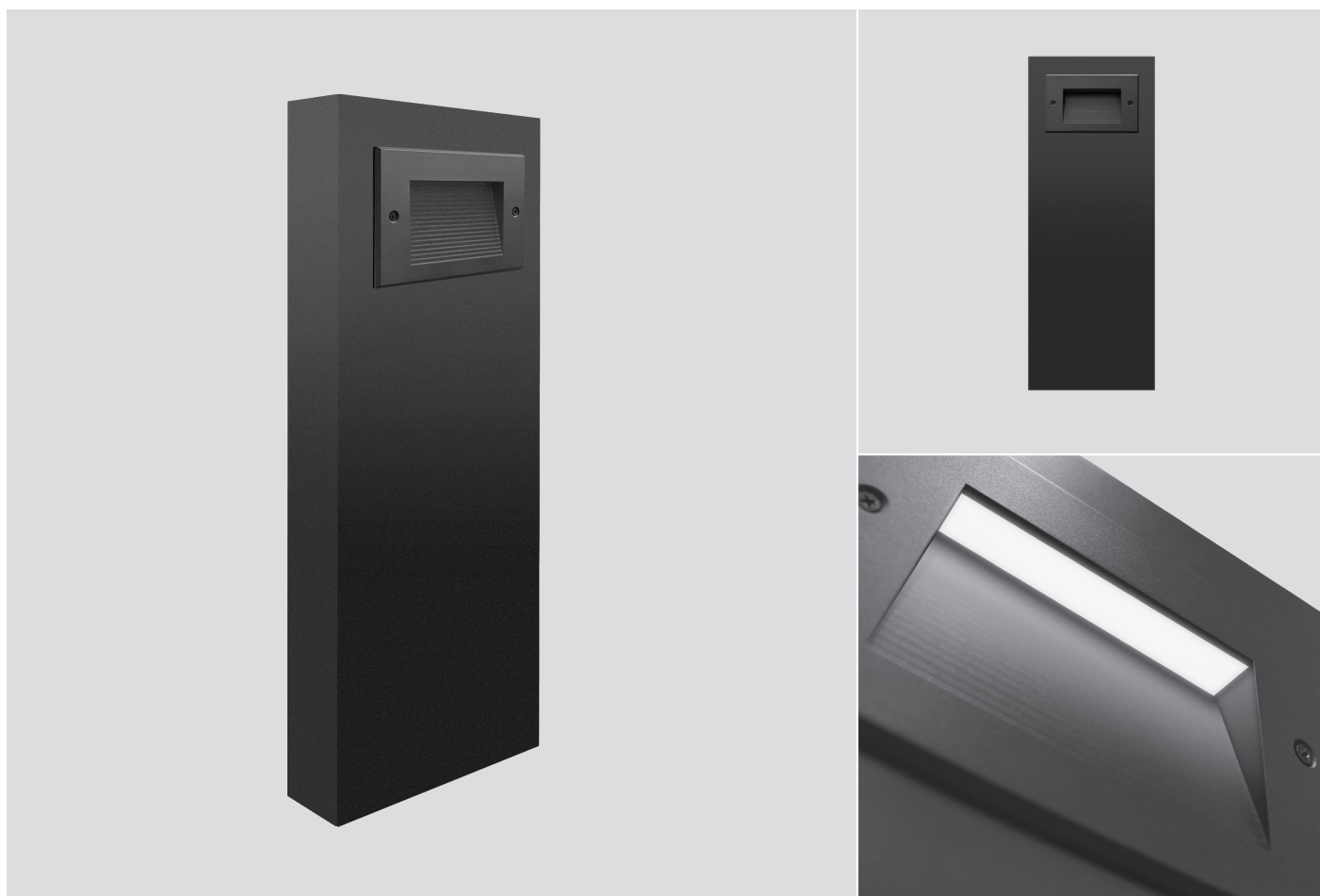
BOLLARD LIGHTING SYSTEM

Outdoor surface-mounted bollard, with a modern and minimalist design with straight cuts, style and simplicity, ideal for integration in places where it is necessary to illuminate passageways.

The reinforced aluminium structure gives it great strength and durability.

CAMIN

MID POWER	220-240V	50-60 HZ	6 2x6	DRIVER INCLUDED	>80	65	08	3000K 4000K	1 OPTIC	<0,95	0	CLASS I	30.000 H L80B10	-20° +35°	M - 4,500 L - 6,00



Comfortable, glare-free lighting.



High IP rating, offering watertightness against humidity, guaranteeing the protection of all electronic components.



Luminaire with the option of 1 or 2-sided illumination.



Photobiological risk 0.



The bollard has a special coating for wet environments, marine environments, etc. as standard.



Finished in white (01) or black (02), other RAL colours on request.

REFERENCE GENERATOR

REF. PRODUCT	COLOUR	POWER (W)	TEMP. COLOUR	SYSTEM	OPTIC	DRIVER	ACCESSORIES
S969 (M)	01 (White)	06 (6,8 W)	83 (3000 K)	-	- Without secondary optics 50°	- ON / OFF Standard	-
S966 (L)	02 (Black)	12 (2x6,8 W)	84 (4000 K)				
S969	02	12	83	-	-	-	-

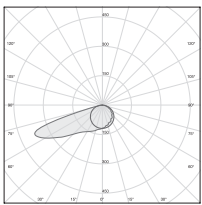
Example configuration **S969021283**

COMPLEMENTS

S90901	Concealed fixing
S90902	Fixing 4 visible screws
S90903	Fixing security bolts



OPTICS



50°

COLOURS



WHITE (01)



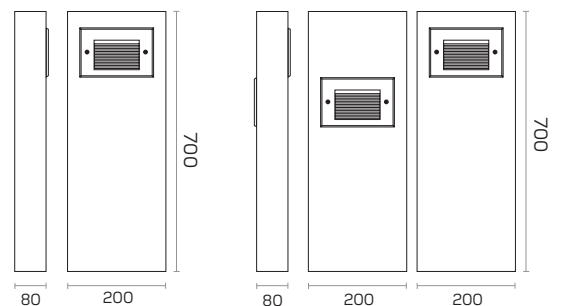
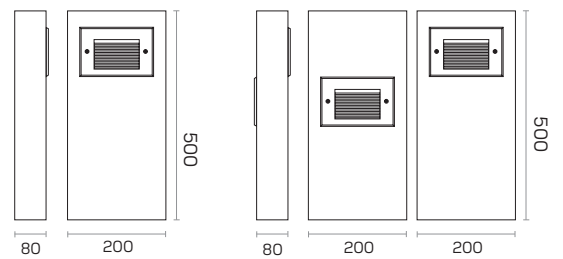
BLACK (02)

*Other RAL colours on request.



DIMENSIONS

*Other sizes on request.



SYSTEM FLOW ACCORDING TO OPTICAL

3000K / CRI>80

4000K / CRI>80

W	Lm. LED	Lm. System	W	Lm. LED	Lm. System
6,8	290	163	6,8	300	172
2x6,8	290x290	163x163	2x6,8	300x300	172x172

*Tolerances: +-7% LED flux / +-10% luminaire output



secom

LIVE THE
LIGHT

Polígono Industrial La Estrella
Calle Marte, 18-21
30500 Molina de Segura
Murcia / Spain
+34 968 80 12 11
www.secom.es

