

secom



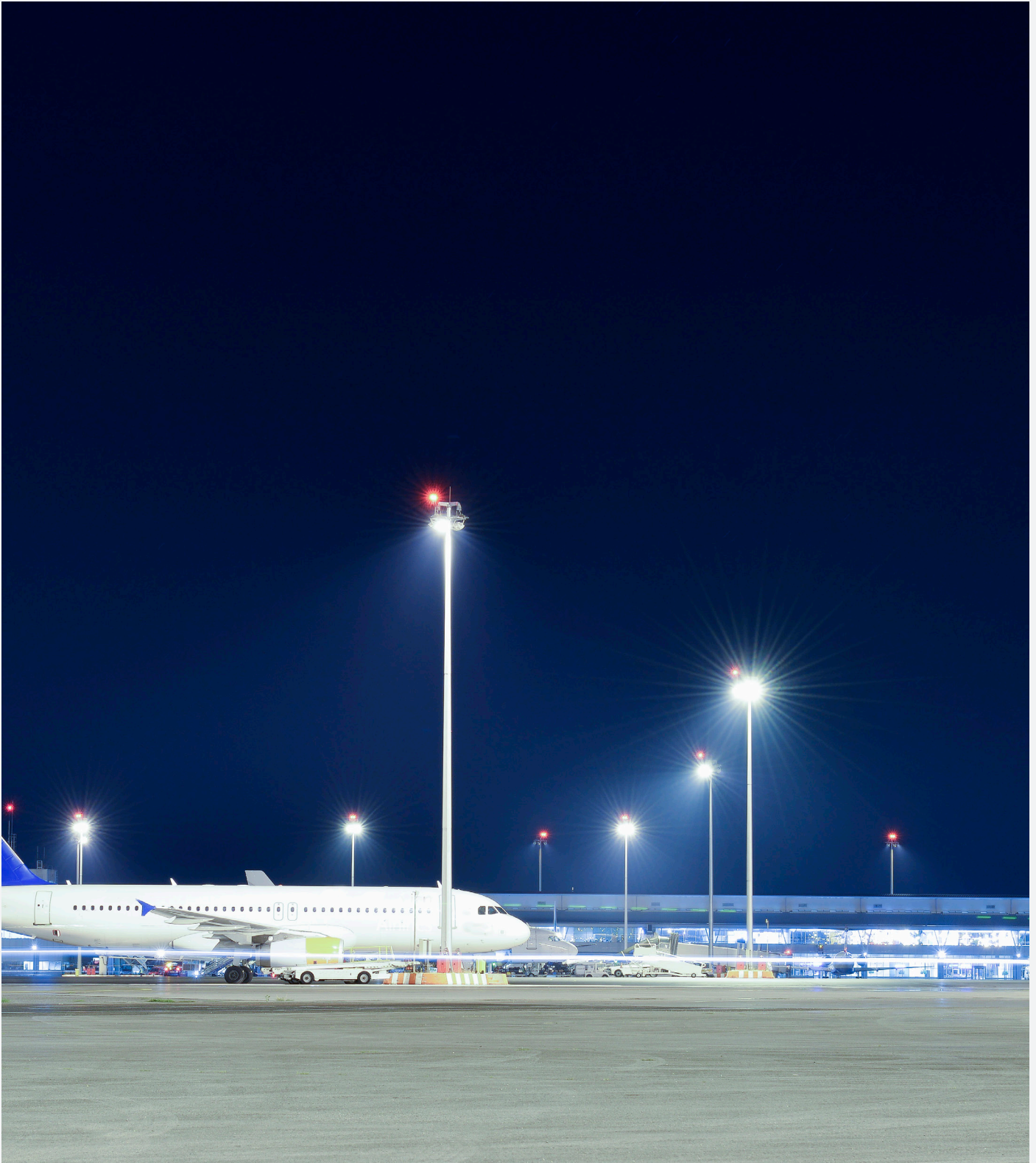
ESDIUM
flood light



TECHNOLOGY AND INNOVATION

ESDIUM LED, a high-efficiency luminaire that offers excellent performance for any type of installation.

Its significant development and versatility allow us to install it in spaces that require high luminous flux while minimizing luminosity losses due to its different lenses.



ESDIUM

FLOOD LIGHT

The new generation of Secom Iluminación lighting systems have been developed prioritising performance, versatility and even the compactness of the system itself.

ERALIGHT system, a new performance and functionality alternative, for all those operations that require a high power LED solution, thus allowing an accelerated return on investment through a Made in Secom concept.

EONLIGHT System, a new concept developed by Secom Iluminación, based on a high-power LED system, capable of meeting all the requirements of projection applications, while maximising energy savings with the highest quality components.

	eralight [®] FLOOD LIGHT SYSTEM	eonlight [®] FLOOD LIGHT SYSTEM
LED	7070	3535
TYPE OF LED	HIGH POWER (HP) Epoxy encapsulated LED, surface mounted assembly	HIGH POWER (HP) Ceramic encapsulated LED, surface mounted assembly
POWER	160 w 320 w 480 w	158 w 317 w 475 w
LIFESPAN	70.000 h. L80B10 Ta35°C Ti85°C	100.000 h. L80B10 Ta35°C Ti85°C
REFLECTOR	Visual comfort	Visual comfort
OPTICS	PMMA	PMMA
LUMINAIRE PROTECTOR	PMMA alto impacto	Vidrio Templado
REGULATION	1-10v Dali 2.0	1-10v Dali 2.0
Nº OPTICS	Without secondary optics (120º) 4 - Symmetrics 1 - Asymmetric	4 - Symmetrics 4 - Asymmetrics
WARRANTY	5 years	Up to 10 years
FEATURES	Pressure control valve Equipment with low losses High performance 10KV overvoltage protecto	Pressure control valve Equipment with low losses High performance 10KV overvoltage protecto

ESDIUM

FLOOD LIGHT



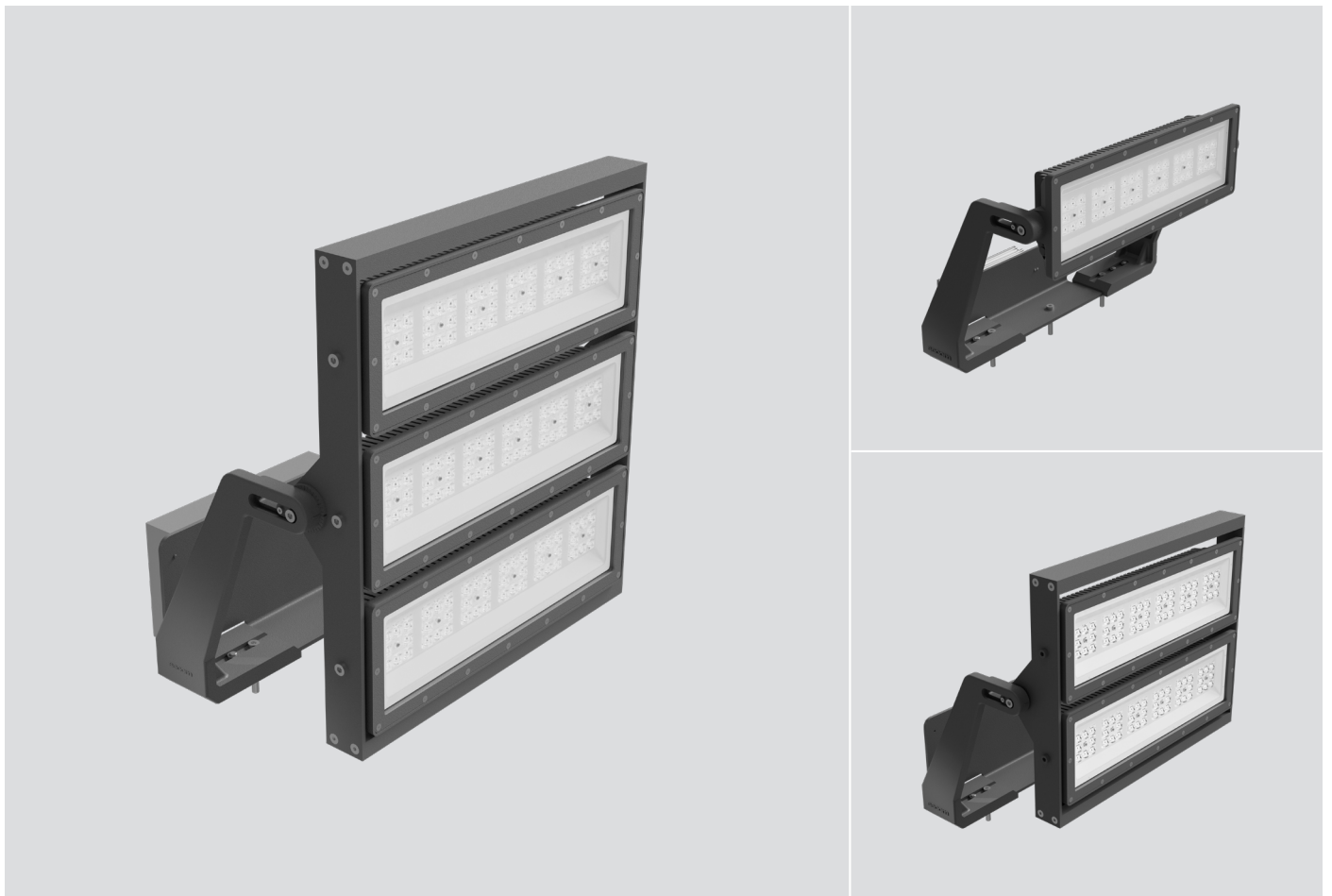
WARR. ERA 5
WARR. EON 10
WARR. LTV 5
360°
RGBW EON
MON. EON



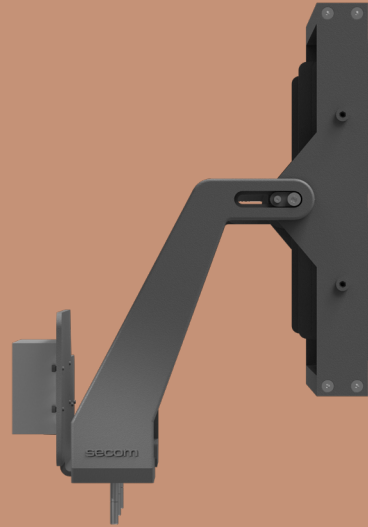
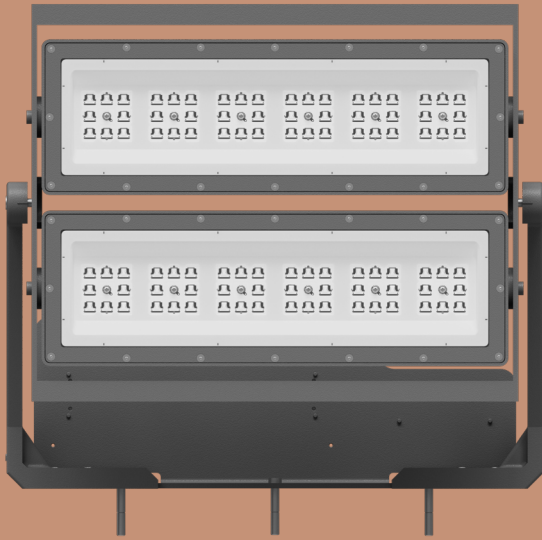
Esdium LED innovation allows it to be very precisely oriented, with an angle marker and individually adjustable modules.

Made of high-performance die-cast aluminium, with methacrylate or glass closure, high-performance LED technology and optics suitable for each of the projects to be lit, making it a very robust and resistant luminaire.

HIGH POWER	220-240V	50-60 HZ	SYSTEM 160 320 480 eralight	DRIVER INCLUDED	OPTIONAL	>70 >90	66	08 *10 optional	3000K 4000K 5000K R/G/B RGBW	8 OPTICS	>0,98	0	CLASS I	70.000 H L80B10 eralight	-40° +35°	S - 9,8 M - 20,2 L - 26,3
			158 317 475 eonlight											100.000 H L80B10 eonlight		
														Tc 85°C		



FEATURES



HP LED, ceramic encapsulated, up to 120 Lm/W, with high durability for harsh environments.
HP LED, epoxy encapsulated, up to 158 Lm/W, high light intensity. Low light decay. Uniform luminous flux.



Option to choose from 8 different optics according to the project to be illuminated.

ltvlight[®]
SPORT SYSTEM

Proyector con sistema específico para instalaciones deportivas.



Protection: in case of failure of any LED, the current continues to flow through the circuit, avoiding the shutdown of the luminaire.



Driver
Ripple <5%
THD <20%
FLICKER FREE



Photobiological risk 0



New extruded silicone gasket. Improved pressure between frame and body.
High IP degree, offering moisture tightness and ensuring the protection of all electronic components.



2 closure options (Glass - PMMA).
Antivandal luminaire, surpassing impact tests of 50 joules.



10KV
Luminaire and driver.
Light warning system included.



Heavy duty lyre for good orientation, up to 360° rotation.
Modular approach for high power applications.



Depressor valve for anti-condensation in all modules.



Watertight quick connector for electrical supply.
Not dimmable.
Easy connection between modules and equipment. Quick maintenance.



Versatile mounting: remote gearbox or fixed to the fork.
Easy replacement of optical motor and electrical assembly.



Glare control included.



Efficient to promote energy savings and easy maintenance during installation. Adjustable tilt angle in situ for each module and/or for the entire fork.



Optimized design for better heat dissipation and to ensure the best performance.



5 years warranty for the **eralight** version and up to 10 years for the **eonlight** version.



Posibilidad de iluminación RGBW o monocolor en el sistema **eonlight**.



Finished in Gray color (58), other RAL colors available upon request.

OPTICS

WHY CHOOSE OPTICS

Optics are a vital part of the efficiency of projection lighting luminaires. The urban environments to be illuminated are very varied and optics improve light control and direct the beam towards the desired space, improving performance and avoiding glare.

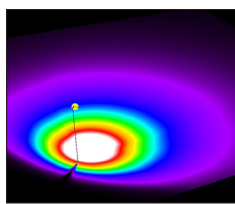
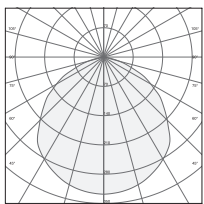
WHY SECOM

At Secom, we have a Research, Development, and Innovation department, where the constant development of new technologies and components in lighting takes place.

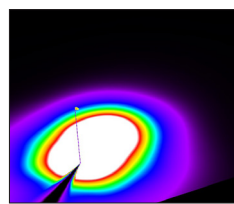
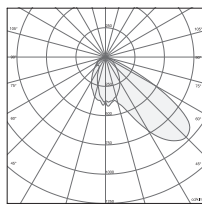
We have a multitude of lens options, optimized for both global lighting configurations and regional specifications. Our focus on designing luminaires with modular lenses, prepared for the future, allows us to use the same luminaire design in multiple applications and meet the specifications of different markets. We have luminaires that allow for greater optical control, even with the most demanding asymmetric light distributions.



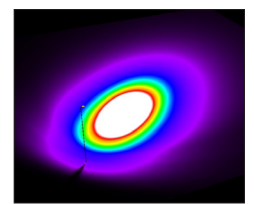
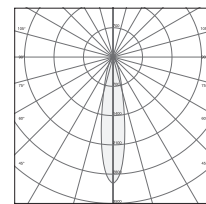
OPTICS eralight®



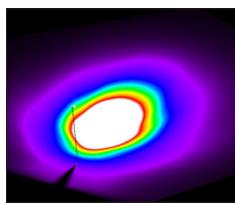
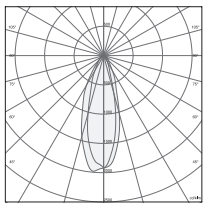
No secondary optics
120°



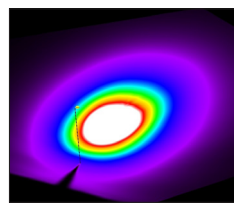
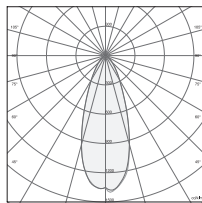
3501
Frontal asymmetric
45°



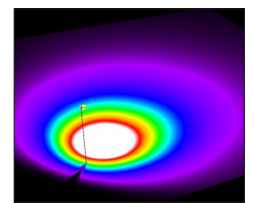
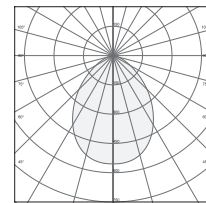
3502
Intensive symmetric
22°



3503
Medium symmetric
32°

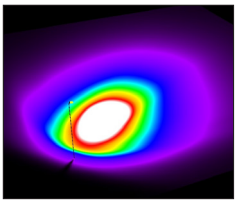
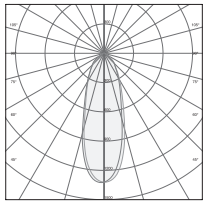


3504
Symmetric medium extensive
41°

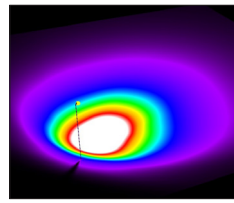
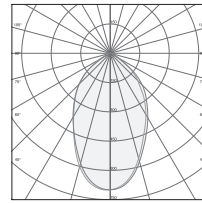


3505
Symmetric extensive
60°

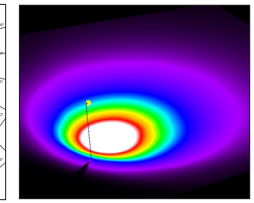
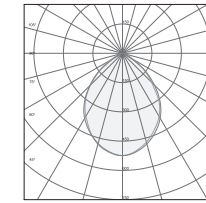
OPTICS eonlight®



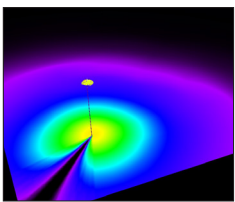
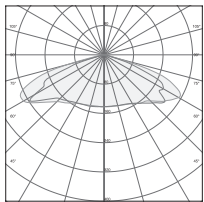
3414
Intensive symmetric
31°



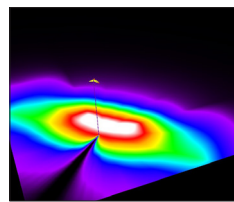
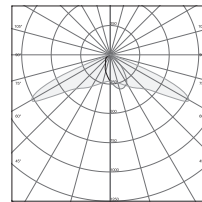
3415
Medium symmetric
56°



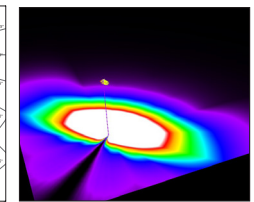
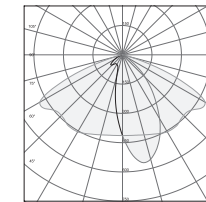
3416
Extensive symmetric
81°



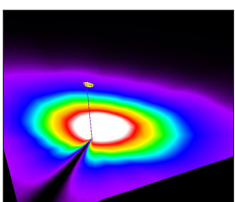
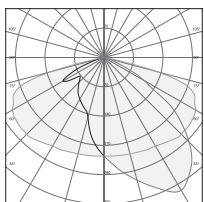
3412
Extensive symmetric



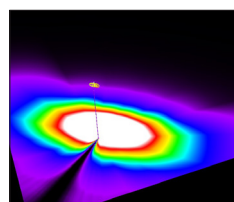
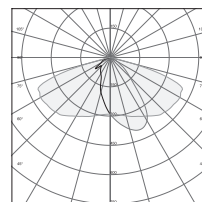
3413
Longitudinal asymmetric



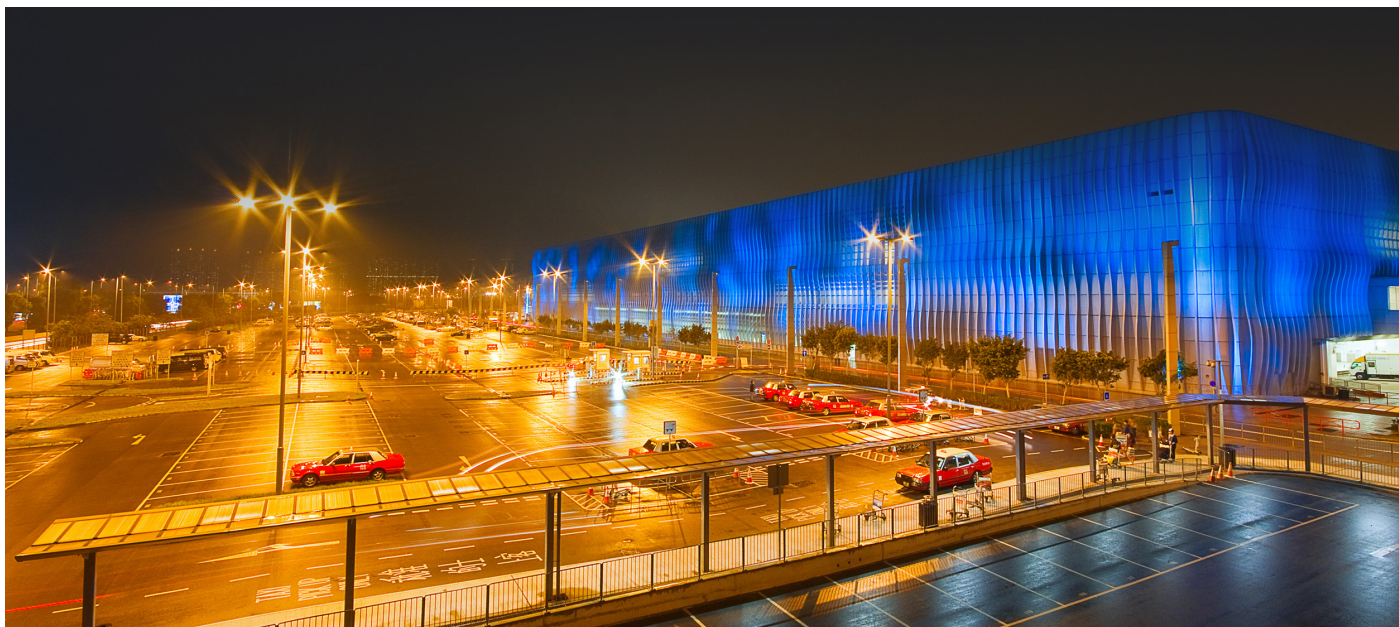
3408
Intensely asymmetric



3409
Medium asymmetric

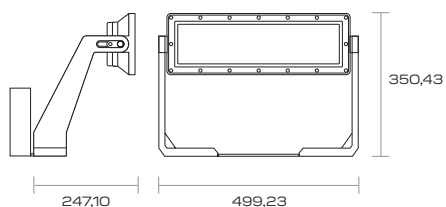


3410
Frontal asymmetric

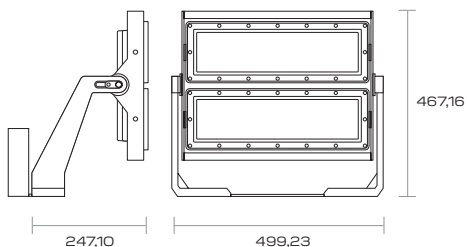


DIMENSIONS

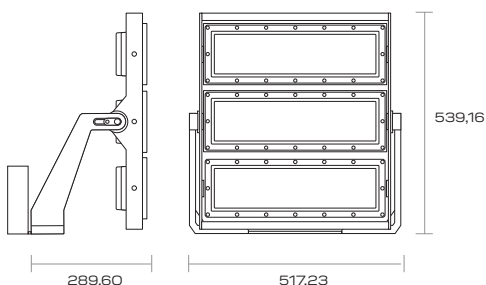
S (1 Module)



M (2 Module)



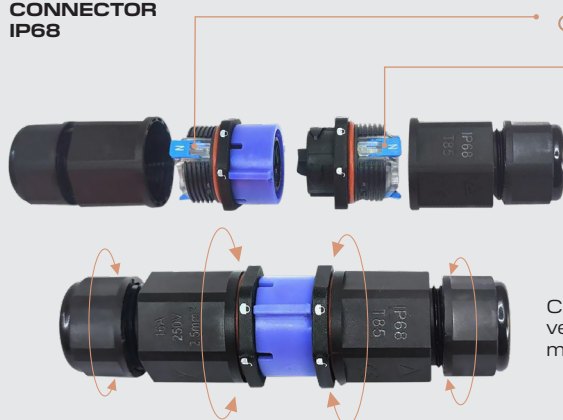
L (3 Module)



QUICK CONNECTOR

ON/OFF VERSION

**QUICK
CONNECTOR
IP68**



Tool-less wiring installation,
quick-connect studs.

Connect the male/female connector,
verify the fit by means of the locking
mechanism.

REFERENCE GENERATOR

PRODUCT REF.	COLOUR	POWER (W)	COLOUR TEMP.	SYSTEM	ÓPTICA	OPTIC	ACCESSORIES
S6300	58 (Gray)	16 (160 W) S	73 (3000 K)	ERA	- No secondary optics 120°	- Standard 1-10 V dimming	IK10 Vandal resistance rating
		32 (320 W) M	74 (4000 K)		3501 Frontal asymmetric 45°	DRD Driver programmable DALI 2.0	
		48 (480 W) L	75 (5000 K)		3502 Intensive symmetric 22°		
					3503 Medium symmetric 32°		
					3504 Symmetric medium extensive 41°		
					3505 Symmetric extensive 60°		
S6300	58	32	74	ERA	3504	DRD	IK10

Example configuration **S6300583274ERA3504DRDIK10**

INSTALLATION



COLOURS



GRAY (58)



*Other RAL colours on request.

SYSTEM FLUX ACCORDING TO OPTICAL VERSION / CRI>70

3000K

W	-120°	3501	3502	3503	3504	3505
160	19701	19850	18093	21649	20009	20976
320	39401	39701	36187	43298	40019	41952
480	59102	59551	54280	64948	60028	62928

4000K

W	-120°	3501	3502	3503	3504	3505
160	20738	20895	19046	22789	21062	22080
320	41475	41791	38091	45577	42125	44160
480	62213	62686	57137	68366	63187	66240

5000K

W	-120°	3501	3502	3503	3504	3505
160	21829	21995	20048	23988	22171	23242
320	43658	43990	40096	47976	44342	46484
480	65487	65985	60144	71964	66513	69726

REFERENCE GENERATOR

PRODUCT REF.	COLOUR	POWER (W)	COLOUR TEMP.	SYSTEM	OPTIC	DRIVER	ACCESSORIES	
S6300	58 (Gray)	15 (158 W) S	73 (3000 K)	EON	3414 Intensive symmetric 31°	- Standard 1-10 V dimming	IK10 Vandal resistance rating	
		31 (317 W) M	74 (4000 K)		3415 Medium symmetric 56°	- Driver DMX RGBW		
		47 (475 W) L	75 (5000 K)		3416 Symmetric extensive 84°	DRD Driver programmable DALI 2.0		
		12 RGBW (125 W) S		83 RGBW (3000 K)		3412 Symmetric extensive		
		25 RGBW (250 W) M		84 RGBW (4000 K)		3413 Longitudinal asymmetric		
		35 RGBW (350 W) L		85 RGBW (5000 K)		3408 Intensive asymmetric		
		95 Red (95 W) S 19 Red (190 W) M 28 Red (285 W) L		R Red		3409 Medium asymmetric		
		95 Green (95 W) S 19 Green (190 W) M 28 Green (285 W) L		G Green		3410 Frontal asymmetric		
		95 Blue (95 W) S 19 Blue (190 W) M 28 Blue (285 W) L		B Blue		0 Symmetric 120° R/G/B/W - RGBW		
						8 Symmetric 48° R/G/B/W - RGBW		
						9 Symmetric 11° R/G/B/W - RGBW		
	S6300	58	25	84 RGBW	EON	0	-	IK10

Example configuration **S6300582584RGBWEON0IK10**

ACCESSORIES

S4500 DMX wall-mounted control (RGBW)

INSTALLATION



COLOURS

 **GRAY (58)**



*Other RAL colours on request.

SYSTEM FLUX ACCORDING TO OPTICAL VERSION / CRI>70

3000K

W	3414	3415	3416	3412	3413	3408	3409	3410
158	13944	14694	15470	14868	13157	15513	15274	15986
317	27887	29387	30940	29736	26313	31026	30548	31972
475	41831	44081	46409	44603	39470	46539	45822	47958

4000K

W	3414	3415	3416	3412	3413	3408	3409	3410
158	14678	15467	16284	15650	13849	16330	16078	16827
317	29355	30934	32568	31301	27698	32659	32156	33655
475	44033	46401	48852	46951	41547	48989	48233	50482

5000K

W	3414	3415	3416	3412	3413	3408	3409	3410
158	15450	16281	17141	16474	14578	17189	16924	17713
317	30900	32562	34282	32948	29156	34378	33848	35426
475	46350	48843	51423	49422	43734	51567	50772	53139

LIGHTING FOR SPORTS FACILITIES

ltvlight® SPORT SYSTEM

The lighting requirements for sports facilities are very demanding, even within the same playing field, the type of lighting and its optimization affects the performance of athletes and how spectators perceive it.

The Spanish lighting standard UNE-EN 12193 establishes the requirements for good quality lighting in sports facilities, classifying lighting into three types based on the level of competition. For each level, the average value and uniformity will be different.

Efficiency and performance - The ltvlight® Sport System has been designed to maximize the sporting experience for both players and spectators. Its minimal glare and low light losses make it ideal for any demanding sports project, including football stadiums, athletics tracks, basketball courts, Olympic swimming pools, and more.

The ltvlight® Sport System uses LED chips specifically designed for TV broadcasting, ensuring a perfect experience for the viewer with no flickering or deficiencies in televised coverage.



REFERENCE GENERATOR

PRODUCT REF.	COLOUR	POWER (W)	COLOUR TEMP.	SYSTEM	OPTIC	DRIVER	ACCESSORIES
S6300	58 (Gray)	16 (160 W) S	93 (3000 K)	LTV	- No secondary optics 120°	- Standard 1-10 V dimming	IK10 Vandal resistance rating
		32 (320 W) M	94 (4000 K)		3501 Frontal asymmetric 45°	DRD Driver programmable DALI 2.0	
		48 (480 W) L	95 (5000 K)		3502 Intensive symmetric 22°		
					3503 Medium symmetric 32°		
					3504 Symmetric medium extensive 41°		
					3505 Symmetric extensive 60°		
S6300	58	320	94	LTV	3504	DRD	IK10

Example configuration **S63005832094LTV3505DRDIK10**

INSTALLATION



COLOURS



GRAY (58)



*Other RAL colours on request.

SYSTEM FLUX ACCORDING TO OPTICAL VERSION / CRI>90

3000K

W	-120°	3501	3502	3503	3504	3505
160	17731	17865	16284	19484	18008	18878
320	35461	35731	32568	38969	36017	37757
480	53192	53596	48852	58453	54025	56635

4000K

W	-120°	3501	3502	3503	3504	3505
160	18664	18806	17141	20510	18956	19872
320	37328	37611	34282	41019	37912	39744
480	55991	56417	51423	61529	56869	59616

5000K

W	-120°	3501	3502	3503	3504	3505
160	19646	19796	18043	21589	19954	20918
320	39292	39591	36086	43178	39908	41836
480	58938	59387	54130	64768	59862	62753

secom

LIVE THE
LIGHT

Polígono Industrial La Estrella
Calle Marte, 18-21
30500 Molina de Segura
Murcia / Spain
+34 968 80 12 11
www.secom.es

