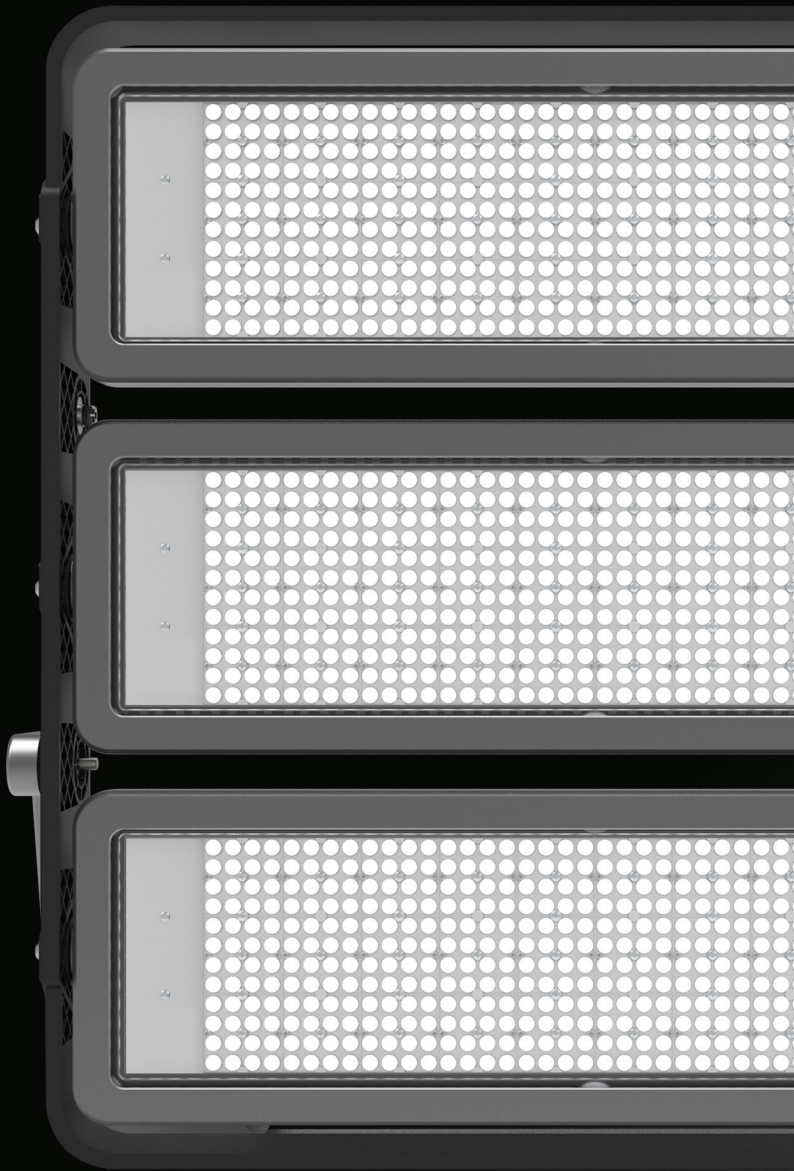


secom



INNVICTUM
flood light



TECHNOLOGY AND INNOVATION

INNVICTUM LED, a high-power luminaire that offers great performance for any type of installation.

Its great development and versatility allows us to place it in spaces that require large lighting packages, equipped with lenses of the highest quality to cover all types of spaces, sports facilities, large surfaces, airports, stations, etc.



INNVICTUM

FLOOD LIGHT

The new generation of Secom Iluminación lighting systems have been developed prioritising performance, versatility and even the compactness of the system itself.

ERALIGHT system, a new performance and functionality alternative for all those operations that require a high-power LED solution, thus accelerating the return on investment through a Made in Secom concept.

EONLIGHT system, a new concept developed by Secom Iluminación, based on a high-power LED system, capable of meeting all the requirements of projection applications, while maximising energy savings with the highest quality components.

	eralight [®] FLOOD LIGHT SYSTEM	eonlight [®] FLOOD LIGHT SYSTEM
LED	7070	3535
LED TYPE	HIGH POWER (HP) Epoxy encapsulated LED, surface mounted	HIGH POWER (HP) Ceramic encapsulated LED, surface mounted
POWER	422 w 591 w 845 w 1267 w	422 w 591 w 845 w 1267 w
LIFE SPAN	70.000 h. L80B10 Ta35°C Ti85°C	100.000 h. L80B10 Ta35°C Ti85°C
OPTICS	PMMA	PMMA
LUMINAIRE PROTECTOR	PMMA high impact	PMMA high impact
FRAME SUPPORT	Nylon + fibre	Aluminium
ADJUSTMENT	Dali 2.0 / *DMX Without secondary	Dali 2.0 / *DMX
NO.OPTICS	optics (120°) 5 - Symmetrical	4 - Symmetric 4 - Asymmetric
WARRANTY	5 years	Up to 10 years
CHARACTERISTICS	Pressure control valve Low loss equipment High efficiency Surge protector 10KV	Pressure control valve Low loss equipment High efficiency Surge protector 10KV

*DMX only for M (845w) / L (1267W) versions

INNVICTUM

FLOOD LIGHT



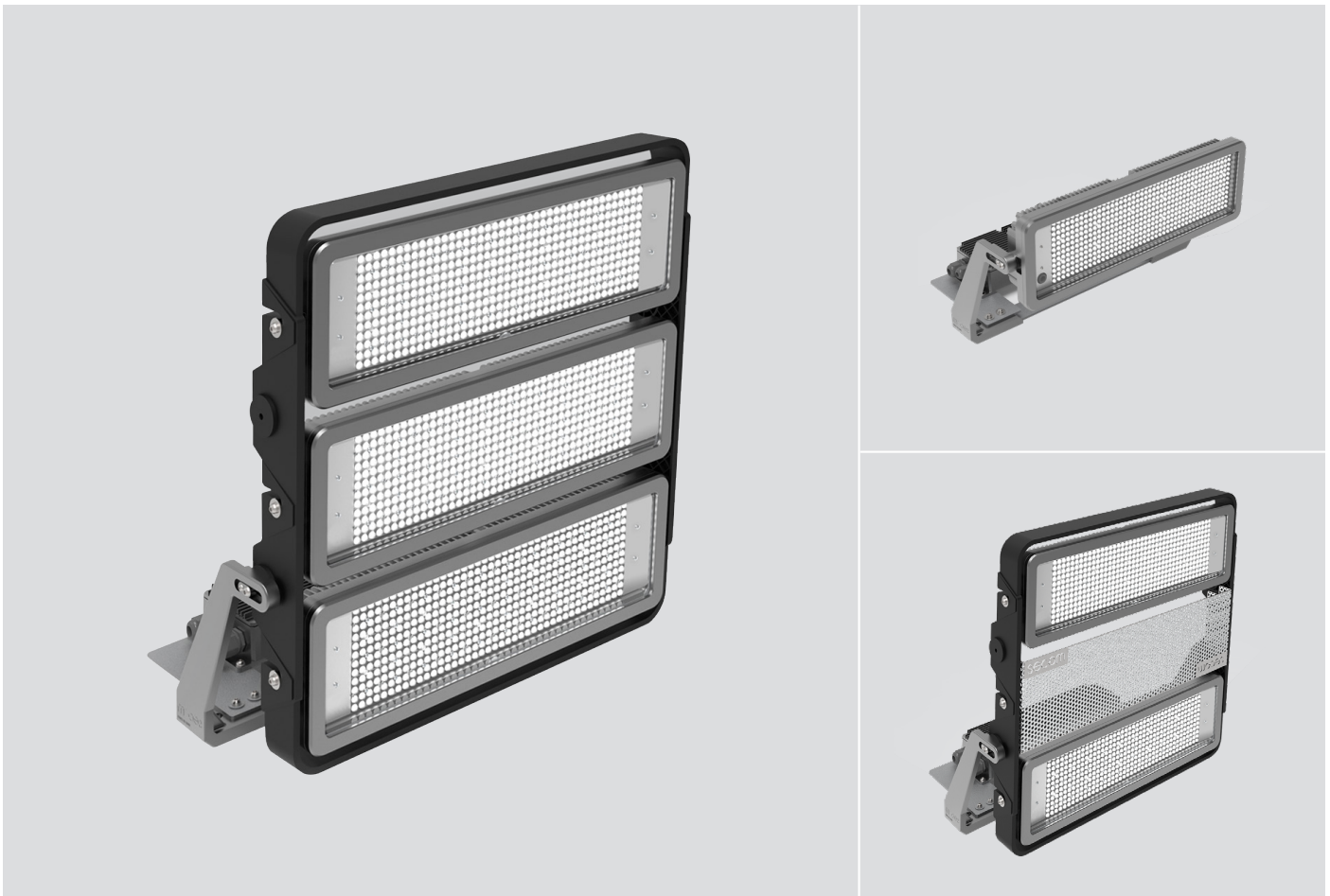
WARR. ERA 5
WARR. EON 10
WARR. LTV 5
360°



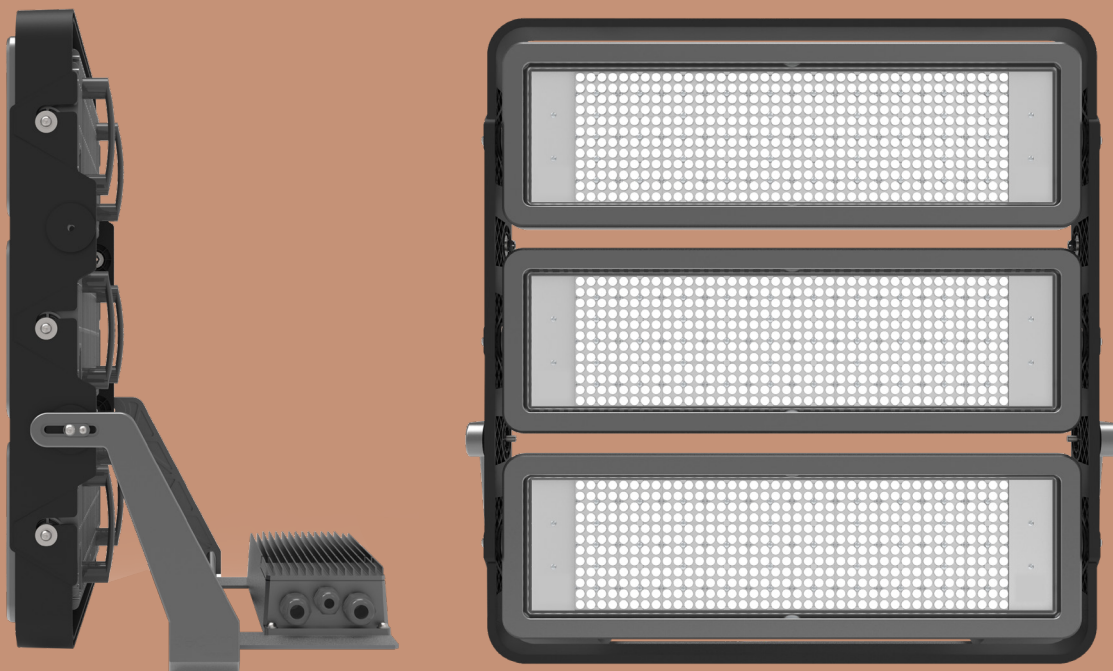
High power luminaire. This floodlight has been designed to adapt to the different needs and requirements where large luminous packages are required.

Its system of optics allows us to adjust in a simple way to high luminance demands in non-optimal existing location and installation conditions.

HIGH POWER	220-240V	50-60 HZ	SYSTEM 422 591 845 1267	DRIVER INCLUDED	OPTIONAL	>70 >90	66	10	3000K 4000K 5000K	8 OPTICS	>0,98	0	CLASS I	70.000 H L80B10 eralight	-40° +35°	S - 20 M - 30 L - 35
														100.000 H L80B10 eonlight		
														Tc 85°C		



FEATURES



HP LED, epoxy encapsulated, 160 Lm/W, high light intensity, Low light decay, Uniform luminous flux.
HP LED, ceramic encapsulated, 130 Lm/W, with high durability for exhaustive environments.



Choice of 8 different optics depending on the project to be illuminated.

ltvlight[®]
SPORT SYSTEM

Projector with specific system for sports facilities. Specific spectrum for sports broadcasting.



Protection, in the event of a LED failure, the current continues to flow through the circuit, preventing the luminaire from switching off.



Driver
Ripple <5%
THD <20%
FLICKER FREE



Photobiological risk 0



New extruded silicone gasket.
Improved body frame pressure.
High IP rating, offering a watertight seal against moisture, ensuring the protection of all electronic components.



PMMA enclosure.
Vandal-proof luminaire, passing impact tests of 50 joules.



10KV
Luminaire and driver.



Highly resistant louvre, up to 360° rotation. Nylon+fibre louvre for the eralight version and aluminium for the eonlight version.
Easy replacement of the optical engine and electrical assembly.



Anti-condensation relief valve on all modules.



Watertight quick connector for power supply.
Not adjustable.



Optimised design for better heat dissipation to ensure the best performance.



5 years warranty for the **eralight** version and up to 10 years for the **eonlight** version.



Finished in Grey (58), other RAL colours on request.

OPTICS

WHY CHOOSE OPTICS

Optics are a vital part of the efficiency of floodlighting luminaires. The urban environments to be illuminated are very varied and optics improve light control and direct the beam towards the desired space, improve performance and avoid glare.

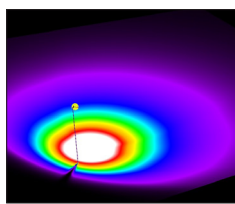
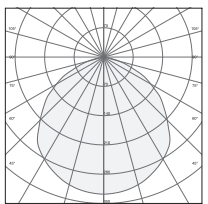
WHY SECOM

At Secom we have an R+D+i department, where the development of new lighting technologies and components is constant.

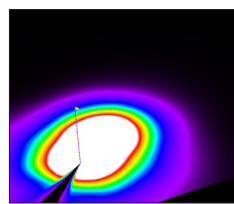
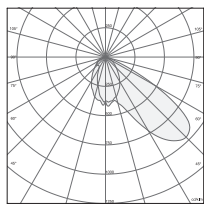
We have a multitude of lens options, optimised for global lighting configurations and regional specifications. Our focus on modular and future-proof lens luminaire design allows us to use the same luminaire design in multiple applications and meet different market specifications. We have luminaires that allow greater optical control even with the most demanding asymmetric light distributions.



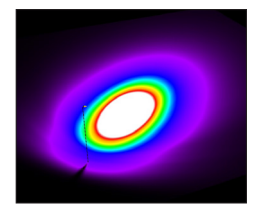
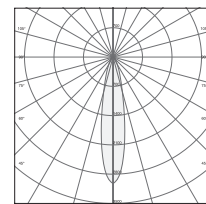
ÓPTICAS eralight®



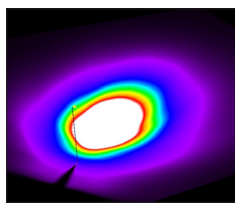
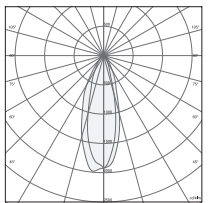
No secondary optics
120°



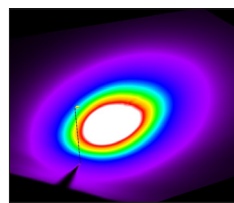
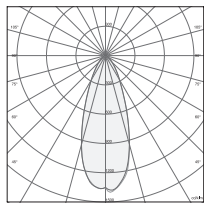
3501
Frontal asymmetric
45°



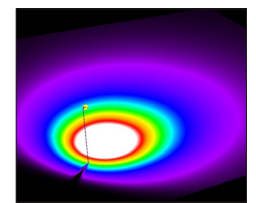
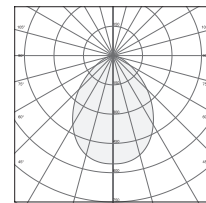
3502
Intensive symmetric
22°



3503
Medium symmetric
32°

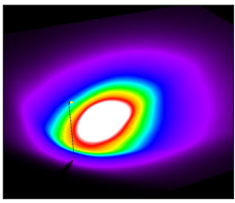
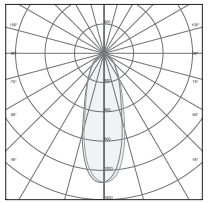


3504
Symmetric medium extensive
41°

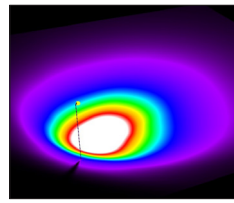
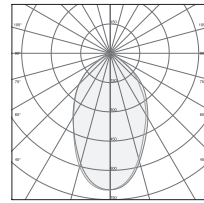


3505
Symmetric extensive
60°

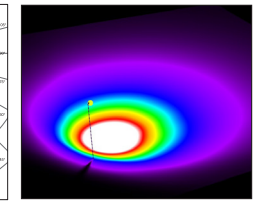
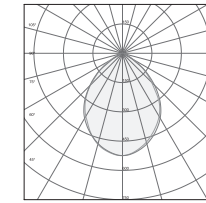
ÓPTICAS eonlight®



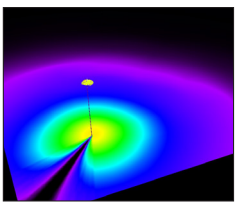
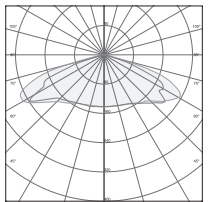
3414
Intensive symmetric
31°



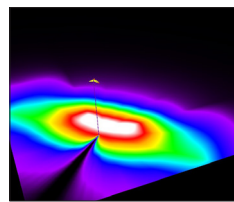
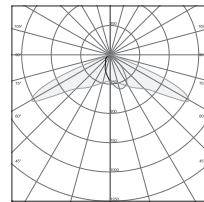
3415
Medium symmetric
56°



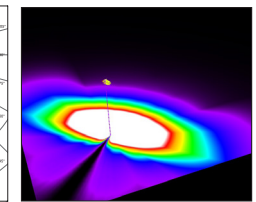
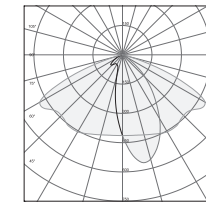
3416
Extensive symmetric
81°



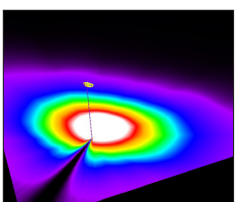
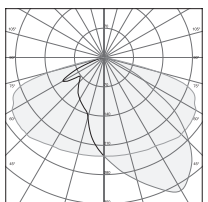
3412
Extensive symmetric



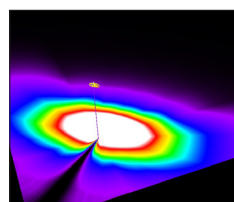
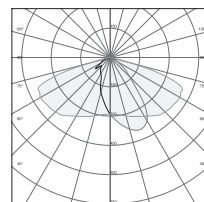
3413
Longitudinal asymmetric



3408
Intensely asymmetric



3409
Medium asymmetric

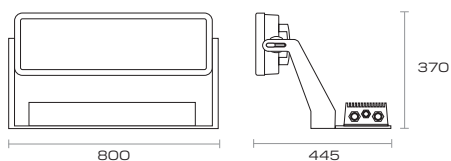


3410
Frontal asymmetric

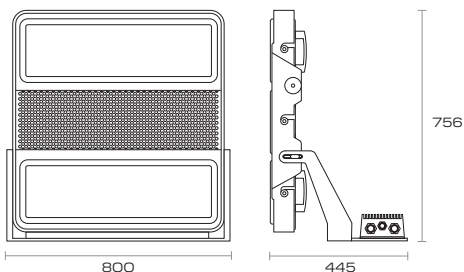


DIMENSIONS

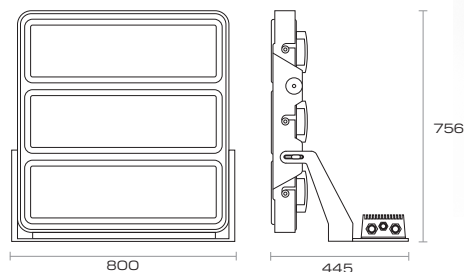
S (1 Module)



M (2 Modules)



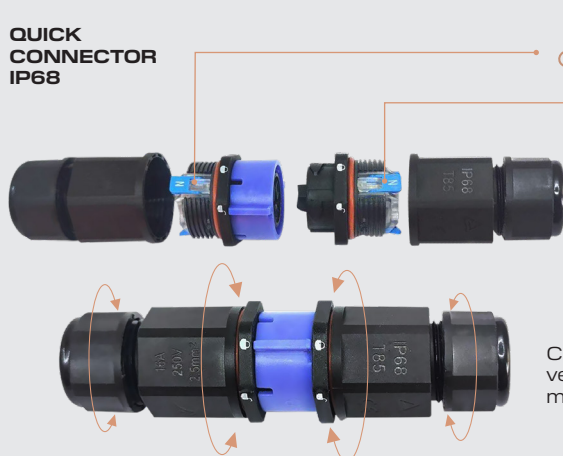
L (3 Modules)



QUICK CONNECTOR

ON/OFF VERSION

**QUICK
CONNECTOR
IP68**



Tool-less wiring installation,
quick-connect studs.

Connect the male/female connector,
verify the fit by means of the locking
mechanism.

REFERENCE GENERATOR

PRODUCT REF.	COLOUR	POWER (W)	TEMP.COLOUR	SYSTEM	OPTIC	DRIVER	ACCESSORIES
S6400	58 (Gray)	42 (422 W) S	73 (3000 K)	ERA	- No secondary optics 120°	- DRD Driver prom. Dali. Estándar.	LÁSER Láser orientación módulos
		59 (591 W) M	74 (4000 K)		3501 Frontal asymmetric 45°	DMX Driver prom. DMX M (845w) / L (1267w)	
		84 (845 W) M	75 (5000 K)		3502 Intensive symmetric 22°		
		126 (1267 W) L			3503 Medium symmetric 32°		
					3504 Symmetric medium extensive 41°		
					3505 Symmetric extensive 60°		
S6400	58	59	74	ERA	3504	DMX	-

Example configuration **S6400585974ERA3504DMX**

INSTALLATION



COLOURS



GRAY (58)



*Other RAL colours on request.

SYSTEM FLUX ACCORDING TO OPTICAL VERSION / CRI>70

Lm. 3000K

W	-120°	3501	3502	3503	3504	3505
422	52532	52929	48243	57730	53355	55933
591	73545	74100	67541	80823	74697	78306
845	105065	105859	96487	115462	106711	111866
1267	157597	158788	144731	173192	160067	167799

Lm. 4000K

W	-120°	3501	3502	3503	3504	3505
422	55297	55715	50783	60769	56164	58877
591	77416	78001	71096	85077	78629	82428
845	110595	111431	101566	121539	112328	117754
1267	165892	167146	152349	182308	168492	176631

Lm. 5000K

W	-120°	3501	3502	3503	3504	3505
422	58208	58648	53456	63968	59120	61976
591	81491	82107	74838	89555	82768	86766
845	116416	117296	106912	127936	118240	123952
1267	174624	175944	160368	191904	177360	185928

REFERENCE GENERATOR

PRODUCT REF.	COLOUR	POWER (W)	TEMP.COLOUR	SYSTEM	OPTIC	DRIVER	ACCESSORIES
S6400	58 (Gray)	42 (422 W) S	73 (3000 K)	EON	3414 Intensive symmetric 31°	- DRD Driver prom. Dali, Standar.	LÁSER Laser guidance modules
		59 (591 W) M	74 (4000 K)		3415 Medium symmetric 56°	DMX Driver prom. DMX M (845w) / L (1267w)	
		84 (845 W) M	75 (5000 K)		3416 Symmetric extensive 84°		
		126 (1267 W) L			3412 Symmetric extensive		
					3413 Longitudinal asymmetric		
					3408 Intensive asymmetric		
					3409 Medium asymmetric		
					3410 Frontal asymmetric		
S6400	58	59	74	EON	3416	DMX	-

Example configuration **S6400585974EON3416DMX**

INSTALLATION



COLOURS



GRAY (58)



*Other RAL colours on request.

SYSTEM FLUX ACCORDING TO OPTICAL VERSION / CRI>70

Lm. 3000K

W	3414	3415	3416	3412	3413	3408	3409	3410
422	37183	39183	41248	39645	35082	41363	40728	42627
591	52056	54856	57747	55503	49115	57909	57019	59678
845	74366	78366	82496	79290	70164	82727	81456	85254
1267	111549	117549	123744	118935	105246	124090	122184	127881

Lm. 4000K

W	3414	3415	3416	3412	3413	3408	3409	3410
422	39140	41245	43419	41732	36928	43540	42872	44870
591	54796	57743	60786	58424	51700	60957	60020	62819
845	78280	82490	86838	83463	73857	87081	85743	89741
1267	117420	123736	130256	125195	110785	130621	128615	134611

Lm. 5000K

W	3414	3415	3416	3412	3413	3408	3409	3410
422	41200	43416	45704	43928	38872	45832	45128	47232
591	57680	60782	63986	61499	54421	64165	63179	66125
845	82400	86832	91408	87856	77744	91664	90256	94464
1267	123600	130248	137112	131784	116616	137496	135384	141696

LIGHTING FOR SPORTS FACILITIES

ltvlight® SPORT SYSTEM

The lighting requirements for sports facilities are very demanding, even within the playing field itself, the type of lighting and the optimisation of the same conditions the game of the sportsmen and women and how the fans can perceive it.

The UNE-EN 12193 lighting standard establishes the requirements for good quality lighting in sports facilities, classifying lighting into three types depending on the level of competition. For each level the average value and uniformity will be different.

Efficiency and performance, the ltvlight® sport system has been conceived to satisfy the sporting experience to the maximum, both for players and spectators, its minimum degree of glare and its low light losses make it ideal for any sporting project, however demanding it may be, football stadiums, athletics tracks, basketball courts, Olympic swimming pools, etc.

LED chip ltvlight® sport system, specific system for TV broadcasting, a perfect experience for the fan, without flickering and without deficiency in the televised broadcasting.



REFERENCE GENERATOR

PRODUCT REF.	COLOUR	POWER (W)	TEMP.COLOUR	SYSTEM	OPTIC	DRIVER	ACCESSORIES
S6400	58 (Gris)	42 (422 W) S	93 (3000 K)	LTV	- No secondary optics 120°	- DRD Driver prom. Dali. Estándar.	LÁSER Láser orientación módulos
		59 (591 W) M	94 (4000 K)		3501 Frontal asymmetric 45°	DMX Driver prom. DMX M (845w) / L (1267w)	
		84 (845 W) M	95 (5000 K)		3502 Intensive symmetric 22°		
		126 (1267 W) L			3503 Medium symmetric 32°		
					3504 Symmetric medium extensive 41°		
					3505 Symmetric extensive 60°		
S6400	58	59	94	LTV	3502	DMX	LÁSER

Example configuration **S6400585994LTV3502DMXLASER**

INSTALLATION



COLOURS



GRAY (58)



*Other RAL colours on request.

SYSTEM FLUX ACCORDING TO OPTICAL VERSION / CRI>90

Lm. 3000K

W	-120°	3501	3502	3503	3504	3505
422	47278	47635	43418	51957	48019	50339
591	66190	66690	60786	72740	67227	70474
845	94558	95272	86838	103914	96040	100679
1267	141836	142909	130258	155873	144059	151019

Lm. 4000K

W	-120°	3501	3502	3503	3504	3505
422	49767	50143	45704	54692	50547	52989
591	69674	70201	63986	76569	70766	74184
845	99535	100287	91409	109384	101095	105978
1267	149302	150431	137114	164077	151642	158968

Lm. 5000K

W	-120°	3501	3502	3503	3504	3505
422	52387	52783	48110	57571	53208	55778
591	73342	73896	67354	80599	74491	78089
845	104774	105566	96220	115142	106416	111556
1267	157161	158349	144331	172713	159624	167335

secom

LIVE THE
LIGHT

Polígono Industrial La Estrella
Calle Marte, 18-21
30500 Molina de Segura
Murcia / Spain
+34 968 80 12 11
www.secom.es

