

secom



**LIKON**  
flood light



# TECHNOLOGY AND INNOVATION

LIKON LED, a high-efficiency luminaire that offers great performance for any type of installation.

Its great development and versatility allows us to place it in spaces where large light packages are required, while at the same time offering low loss of luminosity thanks to its different lenses.



# LIKON

flood light

The new generation of Secom Iluminación lighting systems have been developed prioritising performance, versatility and even the compactness of the system itself.

**ERALIGHT** system, a new performance and functionality alternative for all those operations that require a high-power LED solution, thus allowing to accelerate the return on investment through a Made in Secom concept.

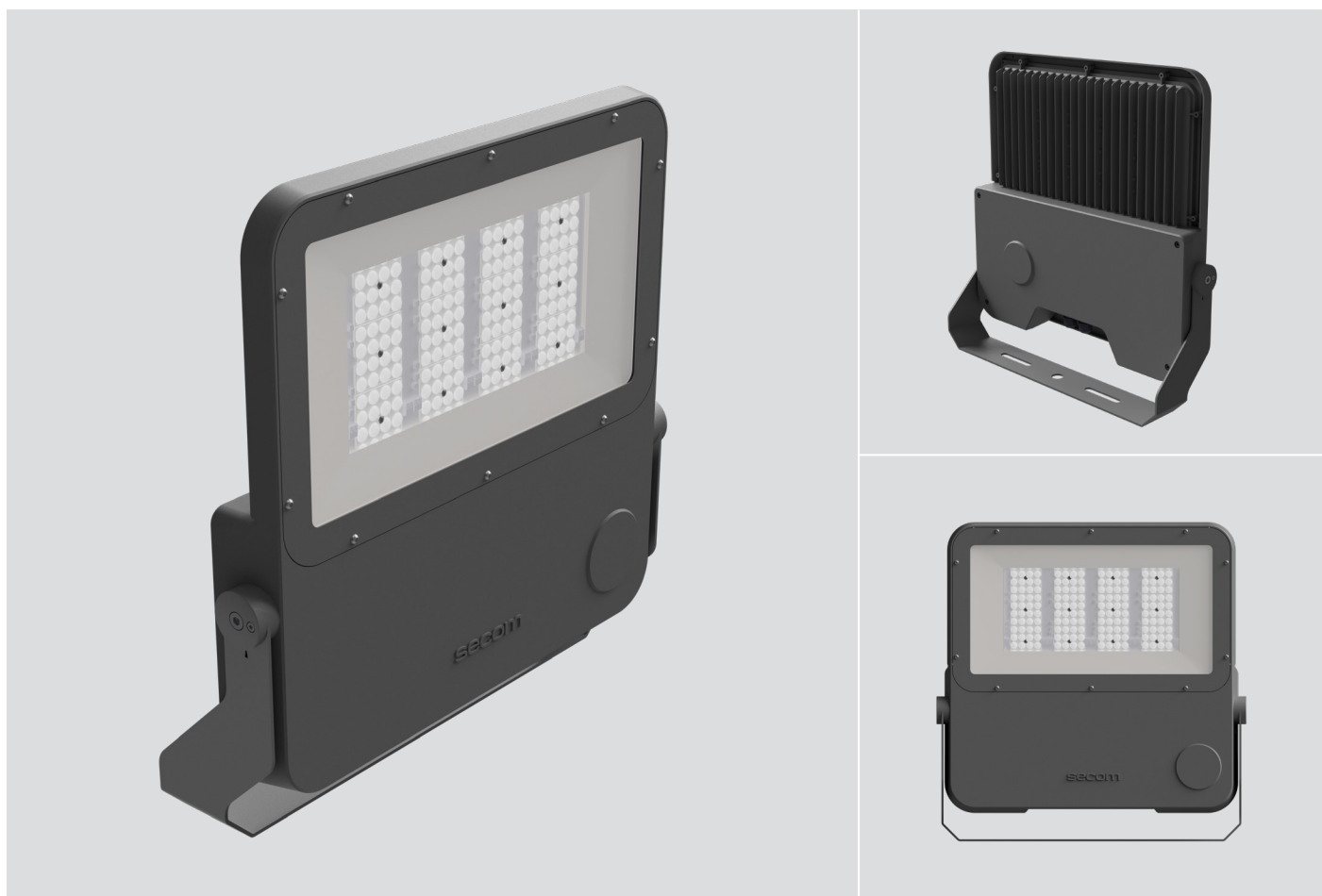
**EONLIGHT** System, a new concept developed by Secom Iluminación, based on a high-power LED system, capable of meeting all the requirements of projection applications, while maximising energy savings with the highest quality components.

	<b>eralight</b> <sup>®</sup> SYSTEM	<b>eonlight</b> <sup>®</sup> SYSTEM
LED	3030	3535
LED TYPE	MID POWER (MP) LED epoxy encapsulated, surface mounted	HIGH POWER (HP) Ceramic encapsulated LED, surface mounted
POWER	105 w 150 w 200 w	105 w 150 w 200 w
LIFE SPAN	50.000 h. L80B10 Ta35°C Ti85°C	100.000 h. L80B10 Ta35°C Ti85°C
REFLECTOR	Visual comfort	Visual comfort
OPTICS	PMMA	PMMA
LUMINAIRE PROTECTOR	PMMA high impact	Tempered glass
DIMMING	1-10v Midnight	1-10v Dali 2.0 Dimming programme Midnight
NO.OPTICS	2 - Asymmetric 5 - Symmetric	4 - Asymmetrical 4 - Symmetrical
GUARANTEE	5 years	Up to 10 years
CHARACTERISTICS	Low loss equipment High efficiency Surge arrester 10KV	Low loss equipment High efficiency Surge arrester 10KV



High quality outdoor floodlight, luminaire with superior light output, perfect to satisfy any outdoor lighting project.

MID POWER	220-240V	50-60 HZ	105 150 200	DRIVER INCLUDED	OPTIONAL	>70	66	08 *10 optional	1700K 3000K 4000K 5000K	8 OPTICS	<0,98	01	CLASS I	50.000 H L80B10	-20° +35°	10,5	
HIGH POWER													CLASS II (on request)	100.000 H L80B10			

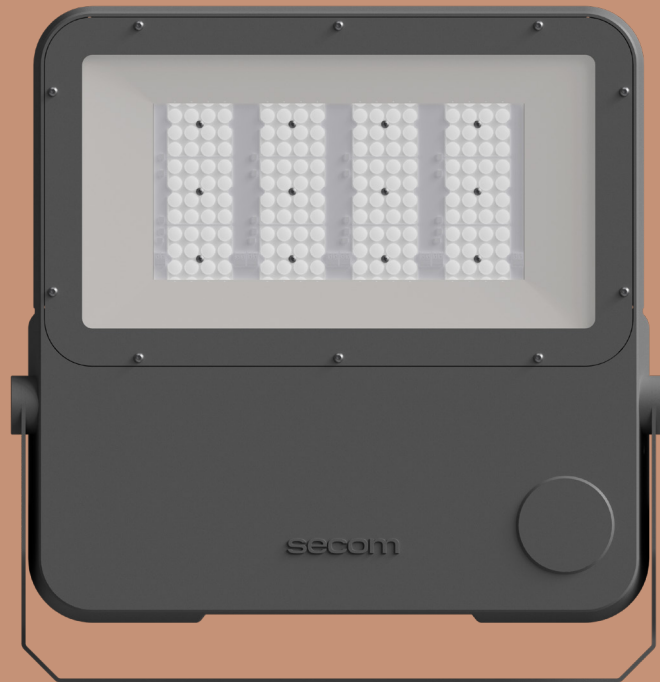


SISTEMAS

LIKON **eralight**<sup>®</sup>  
system

LIKON **eonlight**<sup>®</sup>  
system

# FEATURES



LED

MP LED, epoxy encapsulated, up to 154 Lm/W, high light intensity. Low light decay. Uniform luminous flux.

HP LED, ceramic encapsulated, up to 118 Lm/W, with high durability for harsh environments.



Choice of 8 different optics depending on the project to be illuminated.

PLED

Protection, in the event of failure of any LED, the current continues to flow through the circuit, preventing the luminaire from switching off.



Driver  
Ripple <5%  
THD <20%  
**FLICKER FREE**



Photobiological risk O1.



New extruded silicone gasket. improved body frame pressure. high IP rating, providing a moisture tight seal, ensuring protection of all electronic components.



2 sealing options (PMMA - Glass)  
Vandal resistant luminaire, passing impact tests of 50 joules.



Double PG11 cable gland for LOOP IN LOOP OUT.  
Easy connection between units.  
Quick maintenance.

SPD

10KV  
Luminaire and driver.  
Luminous warning system included.



Heavy duty louvre for good orientation, up to 360° rotation.  
Modular focus for high power applications.



Reflector for better visual comfort.



Versatile and fast mounting.  
Easy replacement of the optical engine and electrical assembly.  
Upgradable technology. Simple internal wiring.

iOT

Possibility of integration of NEMA and ZHAGA remote management systems and incorporation of sensors.



Efficient for energy saving and maintenance during installation.



Optimised design for better heat dissipation and to guarantee the best performance.



5 years warranty for the eralight version and up to 10 years for the eonlight version.



Anti-condensation depressor valve. Preventing condensation inside the luminaire.

# OPTICS

## WHY CHOOSE OPTICS

Optics are a vital part of the efficiency of floodlighting luminaires. The urban environments to be illuminated are very varied and optics improve light control and direct the beam to the desired space, improve performance and avoid glare.

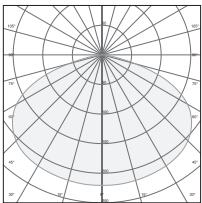
## WHY SECOM

At Secom we have an R+D+i department, where the development of new lighting technologies and components is constant.

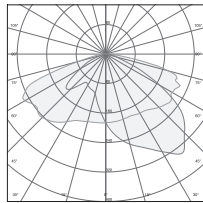
We have a multitude of lens options, optimised for global lighting configurations and regional specifications. Our focus on modular and future-proof lens luminaire design allows us to use the same luminaire design in multiple applications and meet different market specifications. We have luminaires that allow for greater optical control even with the most demanding asymmetric light distributions.



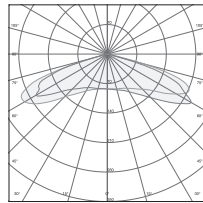
## OPTICS eralight <sup>®</sup>



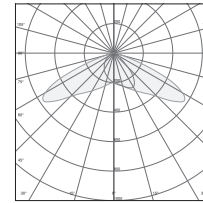
- Symmetrical extensive 120°



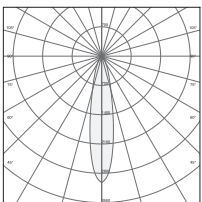
**3405**  
Asymmetric extensive



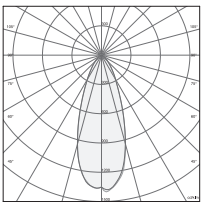
**3406**  
Symmetrical extensional 160°



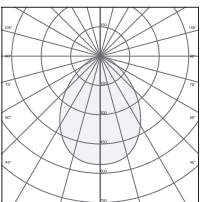
**3407**  
Asymmetric longitudinal



**3414**  
Intensely symmetrical 27°

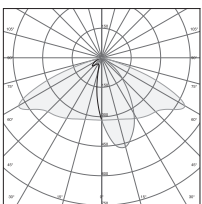


**3415**  
Symmetrical median 56°

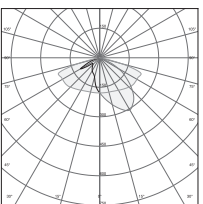


**3416**  
Symmetrical extensional 85°

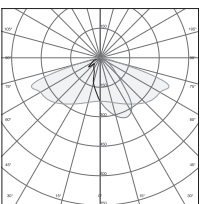
## OPTICS eonlight



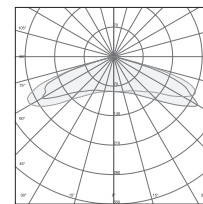
**3408**  
Asymmetric intensive



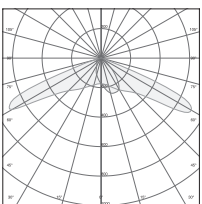
**3409**  
Asymmetric medium



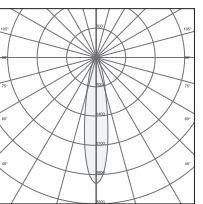
**3410**  
Asymmetric frontal



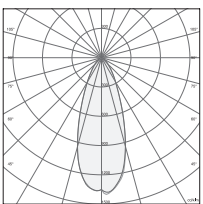
**3412**  
Symmetric extensive



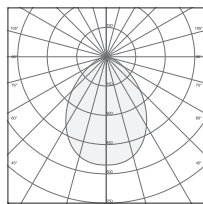
**3413**  
Asymmetric longitudinal



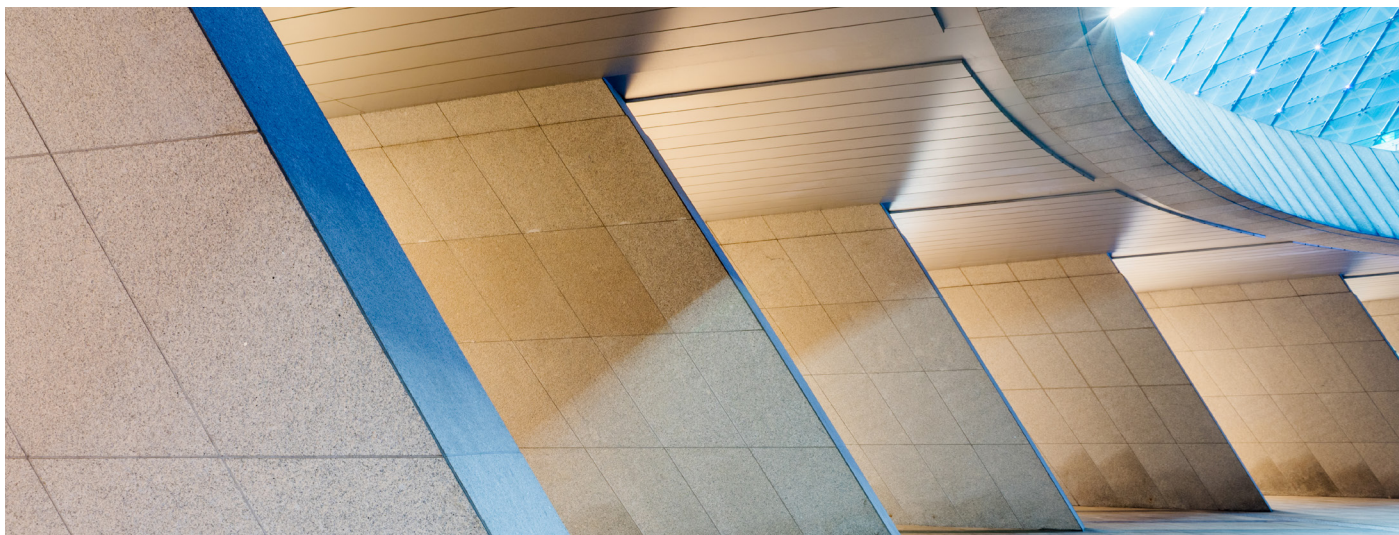
**3414**  
Symmetric intensive 27°



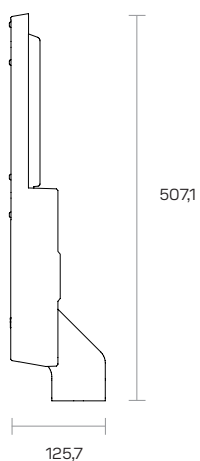
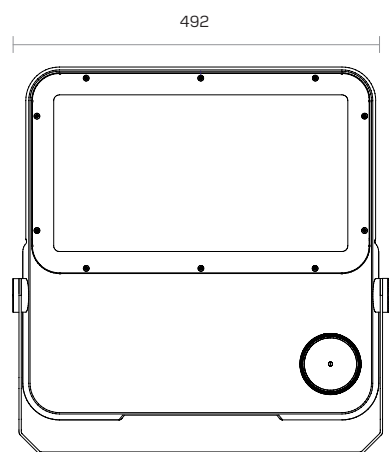
**3415**  
Asymmetric medium 56°



**3416**  
Symmetric extensive 85°



# DIMENSIONS



# LOOP IN LOOP OUT

Luminaire ready for a quick and easy technological upgrade.

Luminaire designed for parallel installation, with loop in and loop out functions, double PG11 cable gland and connector (**LOOP IN LOOP OUT**) for greater versatility.



Anti-condensation valve.



## REFERENCE GENERATOR

REF.PRODUCT	COLOUR	POWER (W)	TEMP.COLOUR	SYSTEM	OPTICS	DRIVER	ACCESSORIES
<b>S4331</b>	<b>02</b> (Black)	<b>105</b> (105 W)	<b>73</b> (3000 K)	<b>ERA</b>	- Symmetric extensive 120°	- ON / OFF Standard	<b>AM</b> Marine environment painting
	<b>58</b> (Grey)	<b>150</b> (150 W)	<b>74</b> (4000 K)		<b>3405</b> Asymmetric extensive	<b>DR</b> Regulation 1-10 V	<b>IK10</b> Protection rating against corrosion
					<b>3406</b> Symmetric extensive 160°	<b>DN</b> Midnight	
					<b>3407</b> Asymmetric longitudinal		
					<b>3414</b> Symmetric intensive 27°		
					<b>3415</b> Symmetric medium 56°		
<b>3416</b> Symmetric extensive 85°							
<b>S4331</b>	<b>58</b>	<b>105</b>	<b>73</b>	<b>ERA</b>	<b>3405</b>	<b>DR</b>	-

Example configuration **S43315810573ERA3405DR**

## SYSTEM FLOW ACCORDING TO OPTICAL VERSION

### 3000K / CRI>70

W	Lm. LED	Lm. System 120°	Lm. System 3405	Lm. System 3406	Lm. System 3407	Lm. System 3414	Lm. System 3415	Lm. System 3416
<b>105</b>	15756	14583	12480	12512	12768	12524	14609	14271
<b>150</b>	22508	20834	17829	17874	18240	17892	20870	20387
<b>200</b>	29261	27084	23178	23236	23711	23260	27131	26504

### 4000K / CRI>70

W	Lm. LED	Lm. System 120°	Lm. System 3405	Lm. System 3406	Lm. System 3407	Lm. System 3414	Lm. System 3415	Lm. System 3416
<b>105</b>	16585	15351	13137	13170	13440	13184	15378	15022
<b>150</b>	23693	21931	18767	18815	19200	18834	21969	21461
<b>200</b>	30801	28510	24397	24459	24959	24484	28559	27899

### 5000K / CRI>70

W	Lm. LED	Lm. System 120°	Lm. System 3405	Lm. System 3406	Lm. System 3407	Lm. System 3414	Lm. System 3415	Lm. System 3416
<b>105</b>	17458	16159	13829	13864	14147	13878	16188	15813
<b>150</b>	24940	23085	19755	19805	20210	19825	23125	22590
<b>200</b>	32422	30010	25682	25747	26273	25773	30063	29367

\*Tolerances: +-7% LED flux / +- 10% luminaire output

## COLOURS

 **BLACK (02)**

 **GREY (58)**

\*Other RAL colours on request.





## REFERENCE GENERATOR

REF.PRODUCT	COLOUR	POWER (W)	TEMP.COLOUR	SYSTEM	OPTICS	DRIVER	ACCESSORIES
<b>S4331</b>	<b>02</b> (Black)	<b>105</b> (105 W)	<b>71</b> (1700 K)	<b>EON</b>	<b>3408</b> Asymmetric intensive	- ON / OFF Standard	<b>AM</b> Marine environment painting
	<b>58</b> (Grey)	<b>150</b> (150 W)	<b>73</b> (3000 K)		<b>3409</b> Asymmetric medium	<b>DR</b> Adjustable 1-10 V	<b>IK10</b> Protection rating against corrosion
		<b>200</b> (200 W)	<b>74</b> (4000 K)		<b>3410</b> Asymmetric frontal	<b>DRD</b> Adjustable driver DALI 2.0	<b>ZHAGA</b> Remote management
			<b>75</b> (5000 K)		<b>3412</b> Symmetric extensive	<b>DRPR</b> Programmed regulation	<b>NEMA</b> Remote management
					<b>3413</b> Asymmetric longitudinal	<b>DN</b> Midnight	<b>*SENSORICA</b> On request Integrated in luminaire
					<b>3414</b> Symmetric intensive 27°		
					<b>3415</b> Asymmetric medium 56°		
			<b>3416</b> Symmetric extensive 85°				
<b>S4331</b>	<b>58</b>	<b>160</b>	<b>73</b>	<b>EON</b>	<b>3405</b>	<b>DRD</b>	-

Example configuration **S43315816073EON3405DRD**

## SYSTEM FLOW ACCORDING TO OPTICAL VERSION

### 1700K / CRI>70

W	Lm. LED	Lm. System 3408	Lm. System 3409	Lm. System 3410	Lm. System 3412	Lm. System 3413	Lm. System 3414	Lm. System 3415	Lm. System 3416
<b>105</b>	10181	9230	9088	9512	8846	7828	8296	8743	9205
<b>150</b>	14545	13186	12983	13588	12638	11183	11852	12490	13149
<b>200</b>	18908	17142	16878	17665	16429	14538	15408	16236	17094

### 3000K / CRI>70

W	Lm. LED	Lm. System 3408	Lm. System 3409	Lm. System 3410	Lm. System 3412	Lm. System 3413	Lm. System 3414	Lm. System 3415	Lm. System 3416
<b>105</b>	11978	10859	10692	11190	10407	9210	9761	10286	10829
<b>150</b>	17111	15513	15274	15986	14868	13157	13944	14694	15470
<b>200</b>	22245	20167	19856	20782	19328	17104	18127	19102	20111

### 4000K / CRI>70

W	Lm. LED	Lm. System 3408	Lm. System 3409	Lm. System 3410	Lm. System 3412	Lm. System 3413	Lm. System 3414	Lm. System 3415	Lm. System 3416
<b>105</b>	12608	11431	11254	11779	10955	9694	10274	10827	11399
<b>150</b>	18012	16330	16078	16827	15650	13849	14678	15467	16284
<b>200</b>	23416	21228	20901	21876	20345	18004	19081	20107	21169

### 5000K / CRI>70

W	Lm. LED	Lm. System 3408	Lm. System 3409	Lm. System 3410	Lm. System 3412	Lm. System 3413	Lm. System 3414	Lm. System 3415	Lm. System 3416
<b>105</b>	13272	12032	11847	12399	11532	10205	10815	11397	11999
<b>150</b>	18960	17189	16924	17713	16474	14578	15450	16281	17141
<b>200</b>	24648	22346	22001	23027	21416	18951	20085	21165	22283

\*Tolerances: +-7% LED flux / +-10% luminaire output

## COLOURS

 **BLACK (02)**

 **GREY (58)**

\*Other RAL colours on request.



# secom

LIVE THE  
LIGHT

Polígono Industrial La Estrella  
Calle Marte, 18-21  
30500 Molina de Segura  
Murcia / Spain  
+34 968 80 12 11  
[www.secom.es](http://www.secom.es)

