

**secom**  
here comes the light



# PROTEK Q1

FLOOD LIGHT LED

**eralight**<sup>®</sup>  
SYSTEM



[www.secom.es](http://www.secom.es)

# PROTEK Q1

## TECHNOLOGY AND INNOVATION

PROTEK Q1 is a highly versatile flood light, with an optimised design that features SECOM **eralight system®** technology, the possibility of choosing between 8 optics and 6 powers, perfect for adapting to the needs required for each project.

PROTEK Q1, a flood light manufactured in state-of-the-art materials and with optimum performance.



# PROTEK Q1

## FLOOD LIGHT

The new generation of Secom Iluminación lighting systems has been developed prioritising performance, versatility and even the compactness of the system itself.

**ERALIGHT SYSTEM**, a system with technical performance for all those operations that require a medium power LED solution, thus accelerating the return on investment through a Made In Secom concept.

### PROTEK Q1

*eralight*<sup>®</sup>  
SYSTEM

### PROTEK Q1

LED	3030	2835
LED TYPE	MID POWER (MP) Epoxy encapsulated LED, surface mounted.	MID POWER (MP) Epoxy encapsulated LED, surface mounted.
POWERS	17,5 w 30 w 54 w	17,5 w 30 w 54 w
LIFE SPAN	50.000 h. L80B10 Ta35°C Ti85°C	50.000 h. L80B10 Ta25°C Ti25°C
OPTICS	PMMA	-
LUMINAIRE PROTECTOR	PMMA (High impact)	PMMA (High impact)
REGULATION	On/Off DRD: Dali DR: 1-10v	On/Off
Nº OPTICS	Without optics (120º) 4 - Symmetric 3 - Asymmetric	Sin óptica (120º)
GUARANTEE	5 years	3 years
CHARACTERISTICS	Pressure control valve. Low loss equipment. High efficiency. Surge protector.	Pressure control valve.

# PROTEK Q1

FLOOD LIGHT



**PROTEK Q1**, high-quality outdoor floodlight made from die-cast aluminium that offers high heat dissipation for improved performance.

Projector with superior light performance, with an efficiency of 153 lm/w.

**Protek Q1** is a luminaire with great flexibility of configuration, up to 7 optics and with the option of dimming, the perfect projector to satisfy any project.

Easy and quick to install thanks to its lightweight, low-profile design and compact dimensions.

LED	⚡	Fr	W System	✓	🌀	IP	IK	°K	CRI	🌡️	△	PF	👁️	🕒	📦
2835	220-240V ac	50/60 Hz	17,5	✓	ON/OFF	66	08	1700K	>70	-15°	without optics 120°	>0,95	RISK PHOTOBIOLOGICAL 0	50.000h. (L80B10)	1,5
3030			30		DALI		*10	3000K (3030)	>80	+35°	7 optics				
MID			54		1-10V		*optional	4000K	(2835)						
POWER								5000K (3030)							
								3000K							
								4000K							
								5700K							
								2835K							



## PHYSICAL CHARACTERISTICS AND MATERIALS



MP LED, epoxy encapsulated, surface mounted.  
153Lm/W, high light intensity.  
Low light decay.  
Uniform luminous flux.

TVS

TVS diodes, protection against electrical overload, such as lightning induced, inductive load switching and electrostatic discharge (ESD) associated with transmission lines and electronic circuits.

PLED

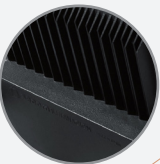
PLED protection, in the event of a LED failure, the current continues to flow through the circuit, preventing the luminaire from switching off.



Photobiological risk 0



Choice of 7 different optics depending on the project to lighting.



Optimised design for better heat dissipation to ensure the best performance.



Anti-condensation depressor valve. Preventing condensation inside the luminaire.



IP66

Silicone gasket.  
High IP rating, offering watertightness against humidity, guaranteeing the protection of all electronic components.



IK08

IK10

\*Optional

Vandal-proof luminaire, passing impact tests of 50 joules.

5

YEARS  
GUARANTEE

3

YEARS  
GUARANTEE

eralight®  
SYSTEM

360°

Heavy-duty lire for good orientation, up to 360° rotation.



IP68

Watertight quick connector for power supply.

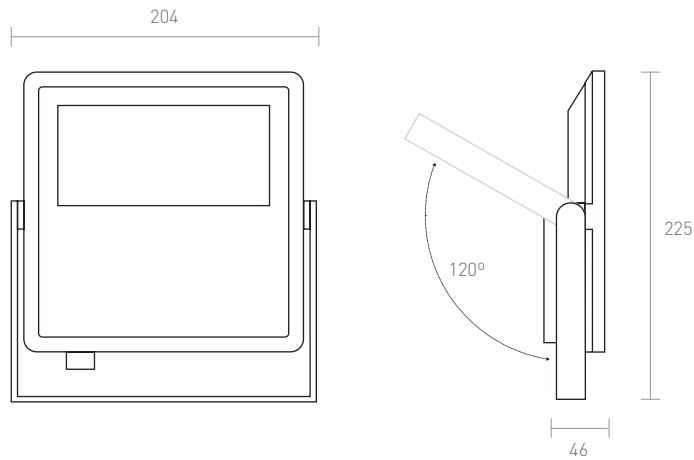


CONNECTION  
WITHOUT TOOLS

**PROTEK Q1**  
eralight®  
SYSTEM



## DIMENSIONS



## INSTALLATION RECOMMENDATIONS

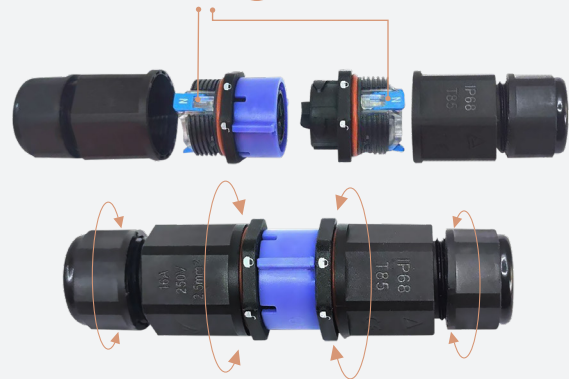


Check that the packing gland is perfectly tightened to its maximum pressure.

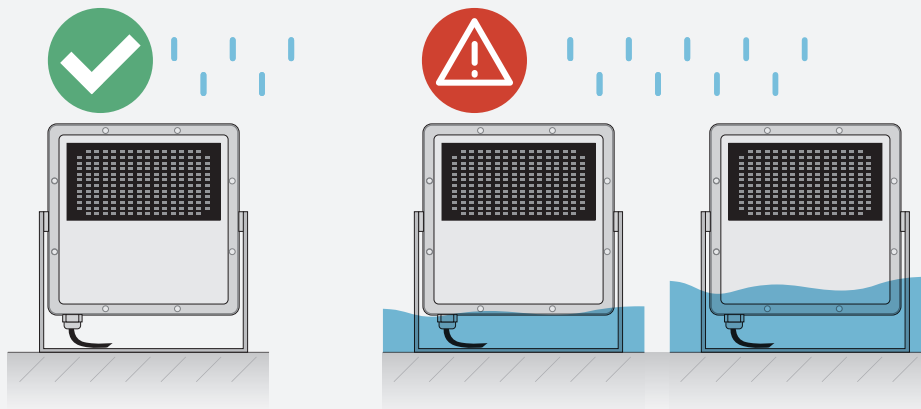
### CONNECTOR FAST IP68



Tool-free wiring installation,  
quick connection studs.



Connect the male/female connector, check the fit by means of the safety lock.



The installation of the floodlight must be carried out in areas where water stagnation cannot occur, as the degree of watertightness of the luminaire means that it cannot be submerged.







## OPTICS

### WHY CHOOSE OPTICS

Optics are a vital part of the efficiency of street lighting luminaires. The urban environments to be illuminated are very varied and optics improve light control and direct the beam to the desired space, improve performance and avoid glare to drivers and pedestrians.

### WHY SECOM

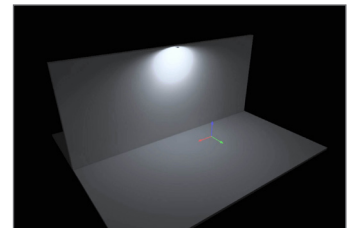
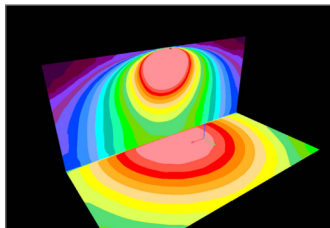
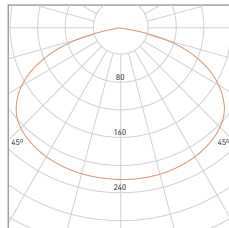
At Secom we have an R+D+i department, where the development of new lighting technologies and components is constant.

We have a multitude of lens options, optimised for global lighting configurations and regional specifications. Our focus on modular and future-proof lens luminaire design allows us to use the same luminaire design in multiple applications and meet different market specifications. We have luminaires that allow greater optical control even with the most demanding asymmetric light distributions.

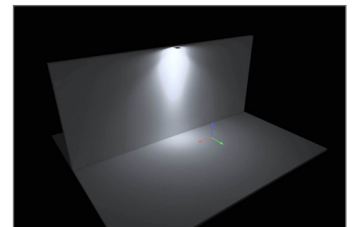
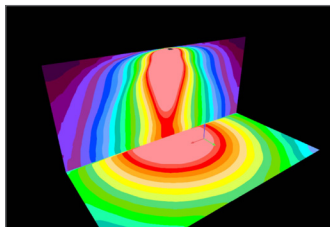
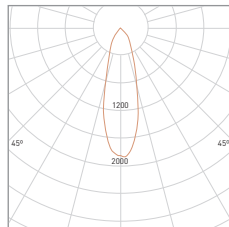


## OPTICS

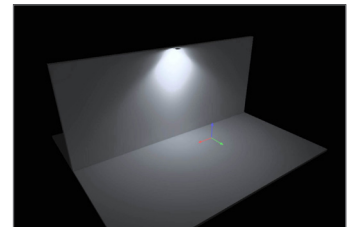
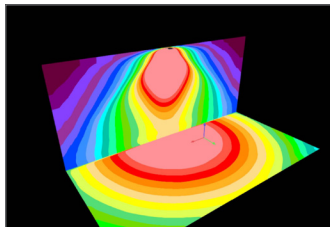
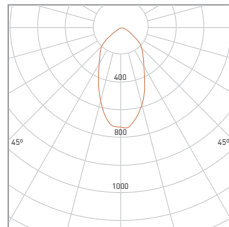
WITHOUT  
SECONDARY  
OPTICS  
120°



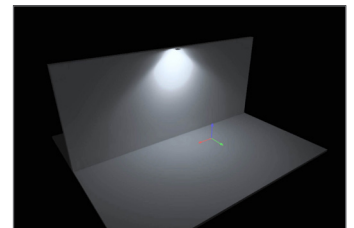
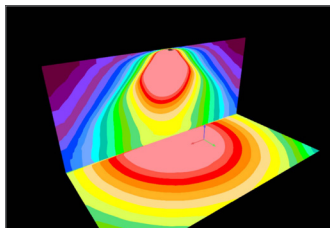
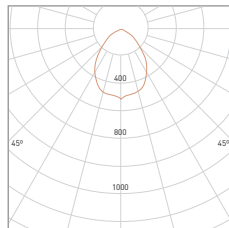
**3401**  
INTENSIVELY  
SYMMETRICAL  
31°



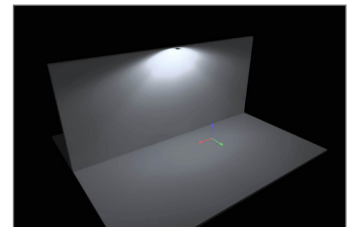
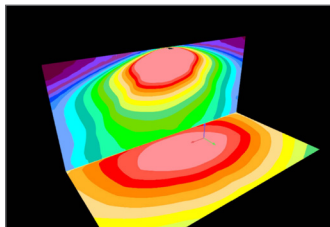
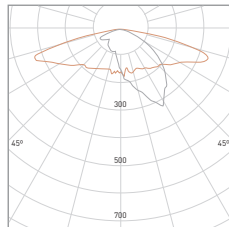
**3402**  
SYMMETRICAL  
MEDIUM  
56°



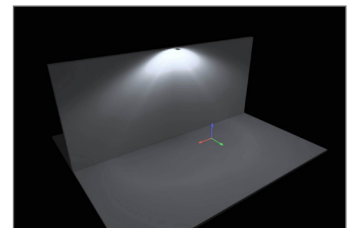
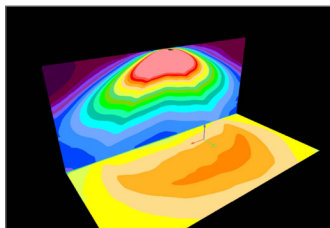
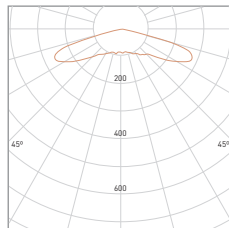
**3403**  
SYMMETRICAL  
EXTENSIVE  
86°



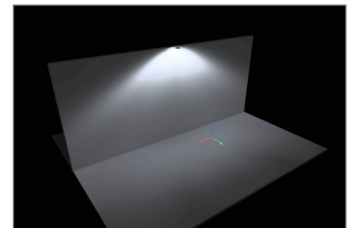
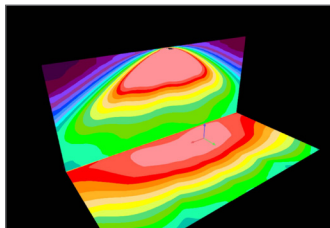
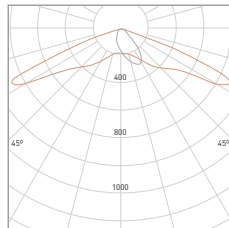
**3405**  
ASYMMETRIC  
EXTENSIVE



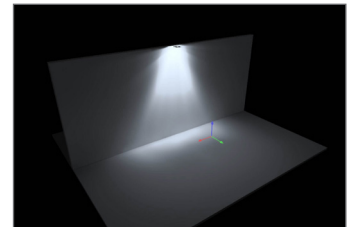
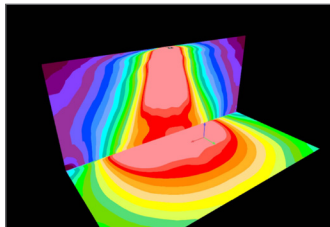
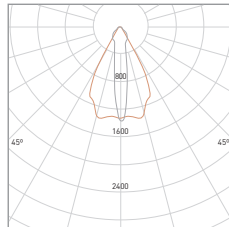
**3406**  
SYMMETRICAL  
EXTENSIVE  
160°



**3407**  
LONGITUDINAL  
ASYMMETRIC




**3411**  
ASYMMETRIC  
OVAL



# PROTEK Q1 *eralight*<sup>®</sup>

FLOOD LIGHT SYSTEM

<b>LED</b>	
3030 MID POWER	50.000h. L80B10



YEARS  
WARRANTY



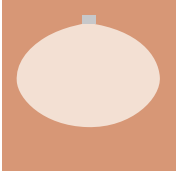
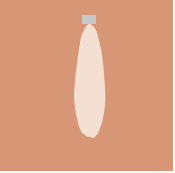
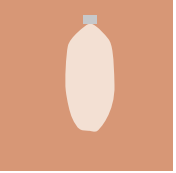

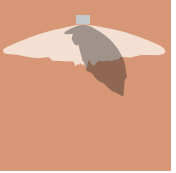
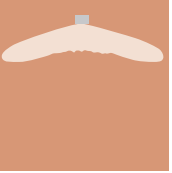
## REFERENCES

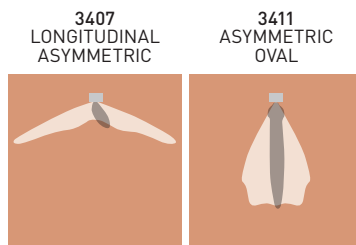
### PROTEK Q1 *eralight* system

Ref.	Colour	Optics	W LED	Lm. LED	W System	Lm. System	Tep. Colour
S4127021771ERA	Black	120°	15,5	2263	17,5	2095	1700K
S4127021773ERA	Black	120°	15,5	2515	17,5	2328	3000K
S4127021774ERA	Black	120°	15,5	2646	17,5	2450	4000K
S4127021775ERA	Black	120°	15,5	2779	17,5	2573	5000K
S4127023071ERA	Black	120°	28	4061	30	3760	1700K
S4127023073ERA	Black	120°	28	4513	30	4178	3000K
S4127023074ERA	Black	120°	28	4750	30	4398	4000K
S4127023075ERA	Black	120°	28	4988	30	4618	5000K
S4127025471ERA	Black	120°	49	5756	54	5329	1700K
S4127025473ERA	Black	120°	49	6395	54	5921	3000K
S4127025474ERA	Black	120°	49	6732	54	6233	4000K
S4127025475ERA	Black	120°	49	7069	54	6545	5000K

Tolerances: +-7% LED flux / +- 10% luminaire wattage

## OPTICAL SUMMARY PROTEK Q1 eralight system

	WITHOUT SECONDARY OPTICS	3401 INTENSIVELY SIMMETRICAL	3402 SYMMETRICAL MEDIUM	3403 SYMMETRICAL EXTENSIVE	3405 ASYMMETRIC EXTENSIVE	3406 SYMMETRICAL EXTENSIVE
						
	120°	31°	56°	86°	-	160°
<b>Recommendation Height</b>	2 - 7 m.	6 - 10 m.	5 - 9 m.	3 - 8 m.	3 - 8 m.	3 - 6 m.
Road	•	•	•	•	•	•
Calle	•	•	•	•	•	•
Avenue	•	•	•	•	•	•
Industrial Space	•	•	•	•	•	•
Roundabout / Intersection	•	•	•	•	•	•
Tunnel	•	•	•	•	•	•
Façades	•	•	•	•	•	•
Ornamental	•	•	•	•	•	•
Monumental	•	•	•	•	•	•



	3407 LONGITUDINAL ASYMMETRIC	3411 ASYMMETRIC OVAL
		
	-	-
<b>Recommendation Height</b>	4 - 9 m.	3 - 8 m.
Road	•	•
Street	•	•
Avenue	•	•
Industrial Space	•	•
Roundabout / Intersection	•	•
Tunnel	•	•
Façades	•	•
Ornamental	•	•
Monumental	•	•

REFERENCE GENERATOR **PROTEK Q1** eralight system

Ref. Product	Luminaire colour	Power W	Colour Temp.	System	Optics	Driver	Accessories
S4127	01 (white)	17 (17,5w)	71 (1.700K)	ERA	- 120°	- (ON/OFF) Standard	<b>4131</b> Opal diffuser
	02 (white)	30 (30w)	73 (3.000K)		<b>3401</b> Int. simmetrical 31°	<b>DRD</b> Driver prom. Dali	<b>AM</b> Marine environment paint
		54 (54w)	74 (4.000K)		<b>3402</b> Sim. medium 56°	<b>DR</b> Regulation 1-10v	<b>IK10</b> Impact protection index
			75 (5.000K)		<b>3403</b> Sim. extensive 86°		
					<b>3405</b> Asym. extensive		
					<b>3406</b> Sym. extensive		
					<b>3407</b> Asym. longitudinal		
				<b>3411</b> Asym. oval			
S4127	02	17	74	ERA	3405	DRD	AM

Example configuration ref. **S4127021774ERA3405DRDAM**

## COMPLEMENTS

S350101	Wall arm 500 mm. / white
S350102	Wall arm 500 mm. / black
S350201	Wall arm 1.000 mm. / white
S350202	Wall arm 1.000 mm. / black
S350301	Wall arm 1.500 mm. / white
S350302	Wall arm 1.500 mm. / black

## PROTEK Q1 eralight system / SYSTEM FLOW ACCORDING TO OPTICAL VERSION / CRI>70

### 1700K

W	- 120°	3401 Int. simmetrical 31°	3402 Sim. medium 56°	3403 Sim. extensive 86°	3405 Asym. extensive	3406 Sym. extensive	3407 Asym. longitudinal	3411 Asym. oval
17,5	2095	1717	2026	1986	2006	1792	1829	1290
30	3760	3229	3766	3679	3217	3226	3292	2547
54	5329	4559	4996	5242	4758	4696	4791	3146

### 3000K

W	- 120°	3401 Int. simmetrical 31°	3402 Sim. medium 56°	3403 Sim. extensive 86°	3405 Asym. extensive	3406 Sym. extensive	3407 Asym. longitudinal	3411 Asym. oval
17,5	2328	1908	2252	2207	2229	1991	2032	1434
30	4178	3588	4185	4088	3575	3584	3658	2830
54	5921	5065	5551	5824	5316	5217	5324	3496

### 4000K


W	- 120°	3401 Int. simmetrical 31°	3402 Sim. medium 56°	3403 Sim. extensive 86°	3405 Asym. extensive	3406 Sym. extensive	3407 Asym. longitudinal	3411 Asym. oval
17,5	2450	2008	2370	2323	2346	2096	2139	1509
30	4398	3777	4405	4303	3763	3773	3850	2979
54	6233	5332	5843	6131	5596	5492	5604	3680

### 5000K

W	- 120°	3401 Int. simmetrical 31°	3402 Sim. medium 56°	3403 Sim. extensive 86°	3405 Asym. extensive	3406 Sym. extensive	3407 Asym. longitudinal	3411 Asym. oval
17,5	2573	2108	2489	2439	2463	2201	246	1585
30	4618	3966	4625	4518	3951	3962	4043	3128
54	6545	5599	6135	6438	5876	5767	5884	3863

# PROTEK Q1

FLOOD LIGHT

<b>LED</b>	
2835 MID POWER	50.000h. L80B10



3  
YEARS  
WARRANTY



## REFERENCES

### PROTEK Q1

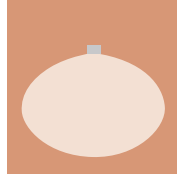
Ref.	Colour	Optics	W LED	Lm. LED	W System	Lm. System	Tep. Colour
S4127021783	Black	120°	15,5	2263	17,5	2095	3000K
S4127021784	Black	120°	15,5	2382	17,5	2205	4000K
S4127021785	Black	120°	15,5	2501	17,5	2315	5700K
S4127023083	Black	120°	28	4061	30	3760	3000K
S4127023084	Black	120°	28	4275	30	3958	4000K
S4127023085	Black	120°	28	4489	30	4156	5700K
S4127025483	Black	120°	49	5756	54	5329	3000K
S4127025484	Black	120°	49	6059	54	5610	4000K
S4127025485	Black	120°	49	6362	54	5890	5700K

Tolerances: +-7% LED flux / +- 10% luminaire wattage



## OPTICAL SUMMARY **PROTEK Q1**

WITHOUT  
SECONDARY  
OPTICS



120°

<b>Recommendation Height</b>	2 - 7 m.
<b>Road</b>	•
<b>Street</b>	•
<b>Avenue</b>	•
<b>Industrial Space</b>	•
<b>Roundabout / Intersection</b>	•
<b>Tunnel</b>	•
<b>Façades</b>	•
<b>Ornamental</b>	•
<b>Monumental</b>	•

## REFERENCE GENERATOR **PROTEK Q1**

Ref. Product	Luminaire colour	Power W	Colour Temp.	Optics	Accessories
S4127	01 (White)	17 (17,5w)	83 (3.000K)	- 120°	<b>4131</b> Opal diffuser
	02 (Black)	30 (30w)	84 (4.000K)		<b>AM</b> Marine environment paint
		54 (54w)	85 (5.700K)		<b>IK10</b> Impact protection index
S4127	02	17	84	-	<b>AM</b>

Example configuration ref. **S4127021783AM**

## COMPLEMENTS

S350101	Wall arm 500 mm. / white
S350102	Wall arm 500 mm. / black
S350201	Wall arm 1.000 mm. / white
S350202	Wall arm 1.000 mm. / black
S350301	Wall arm 1.500 mm. / white
S350302	Wall arm 1.500 mm. / black

**PROTEK Q1 / SYSTEM FLOW ACCORDING TO OPTICAL VERSION / CRI>80****3000K**

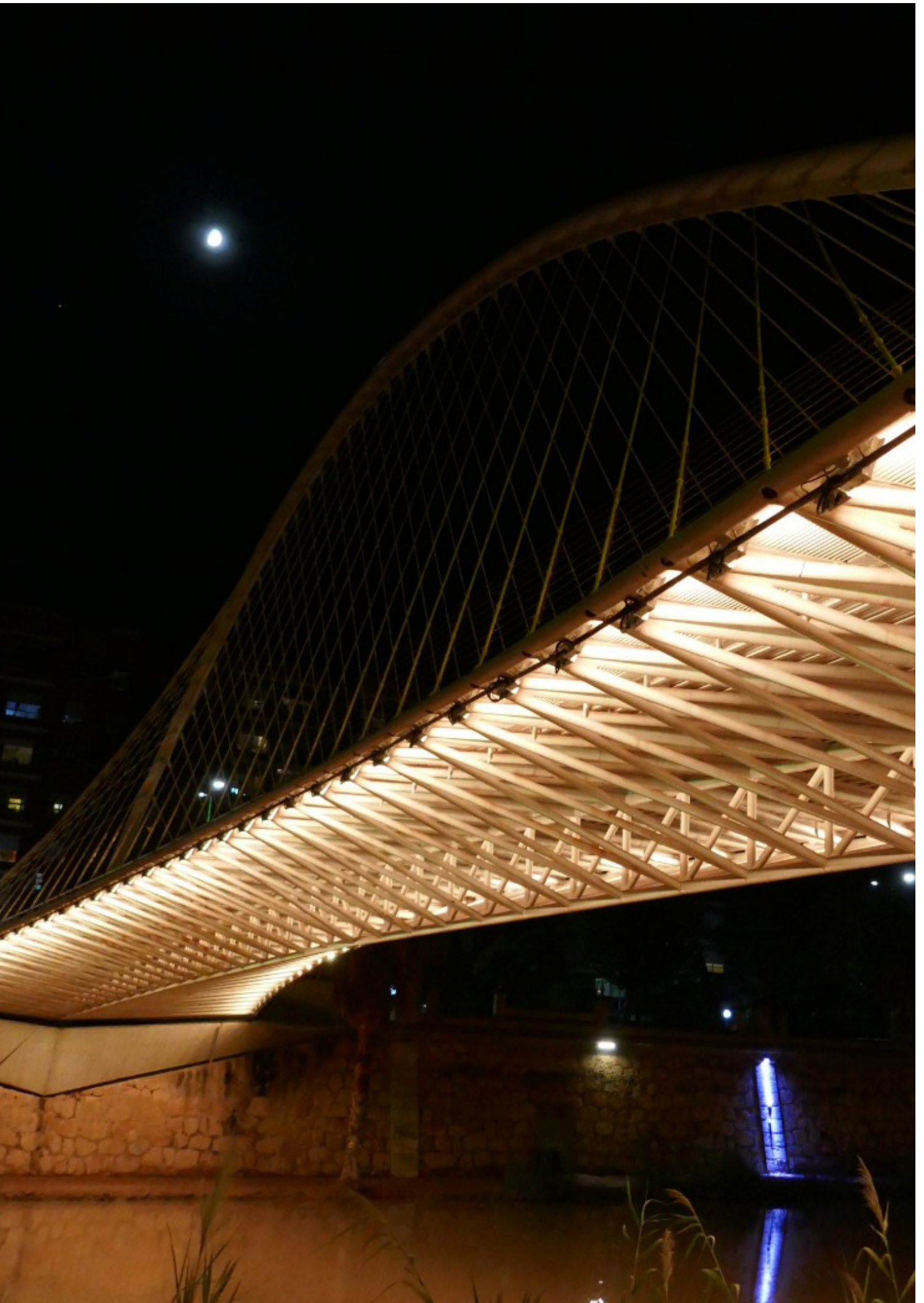
<b>W</b>	- 120°
17,5	2095
30	3760
54	5329

**4000K**

<b>W</b>	- 120°
17,5	2205
30	3958
54	5610

**5700K**

<b>W</b>	- 120°
17,5	2315
30	4156
54	5890



secom  
here comes the light



[www.secom.es](http://www.secom.es)